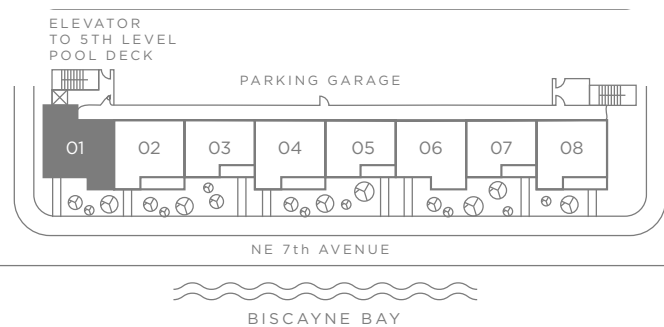
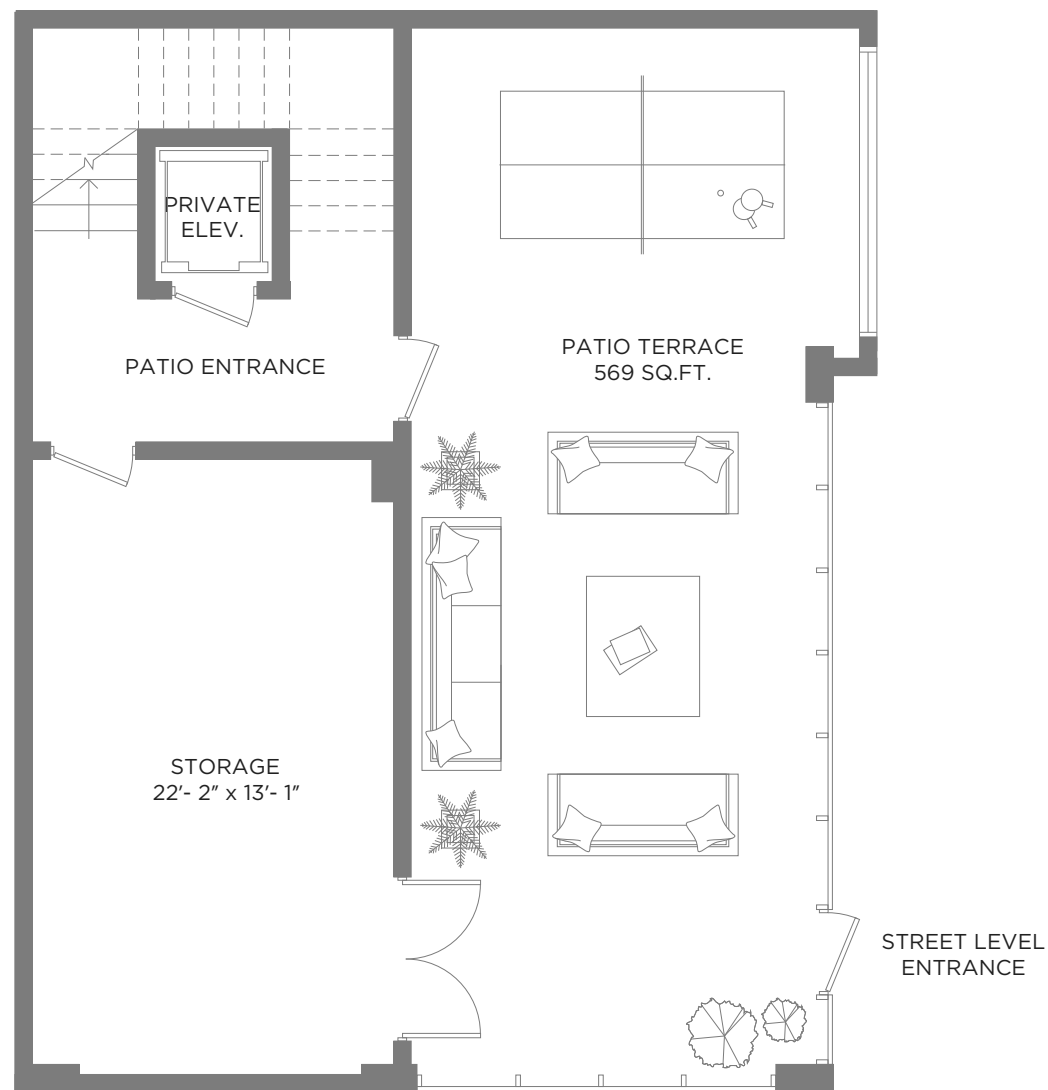


1<sup>ST</sup> LEVEL



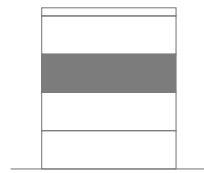
2<sup>ND</sup> LEVEL



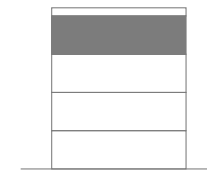
## BAYHOME 01

5 BEDROOMS / 5 BATHS / DEN / STUDY / LAUNDRY / STORAGE

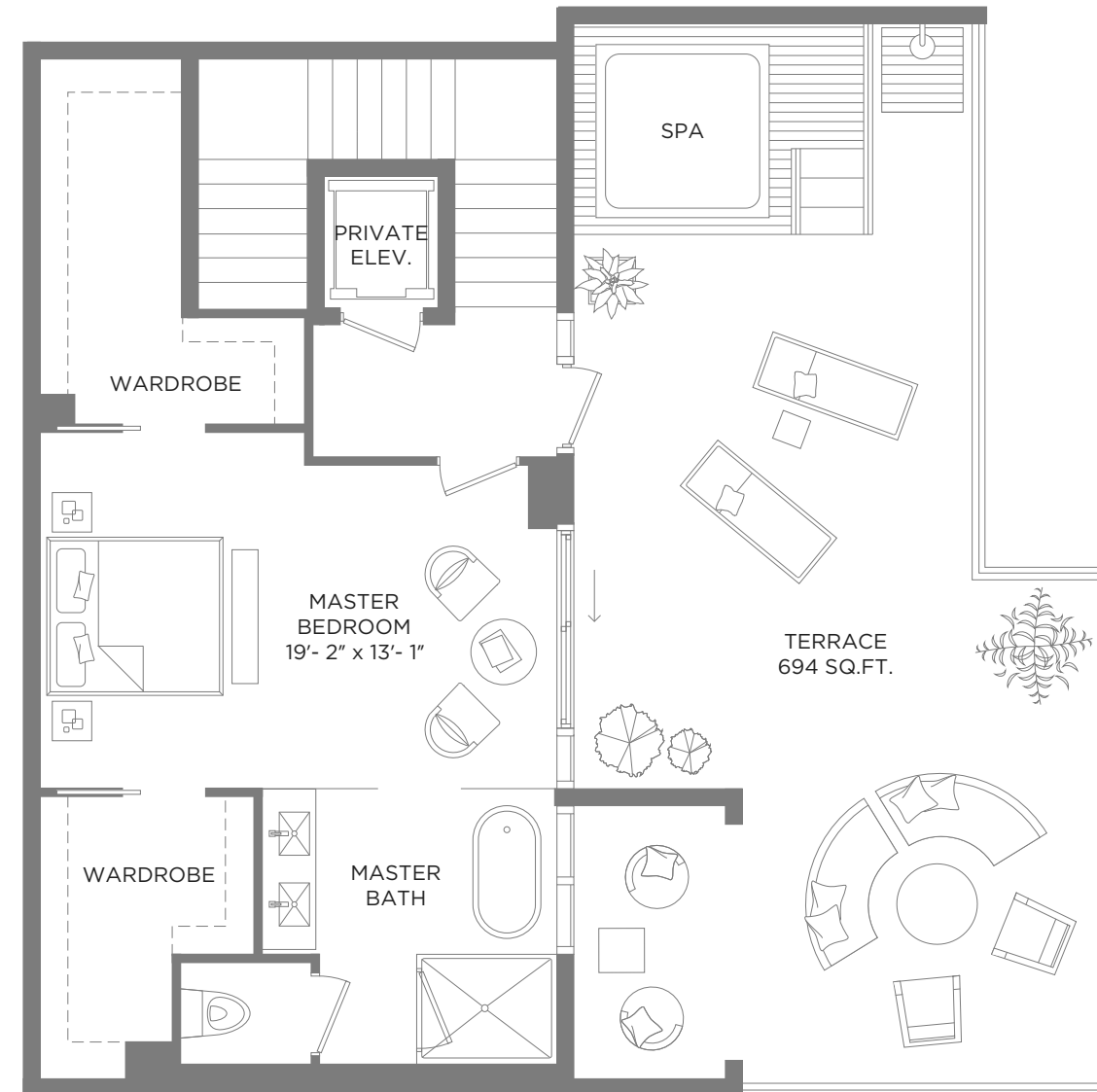
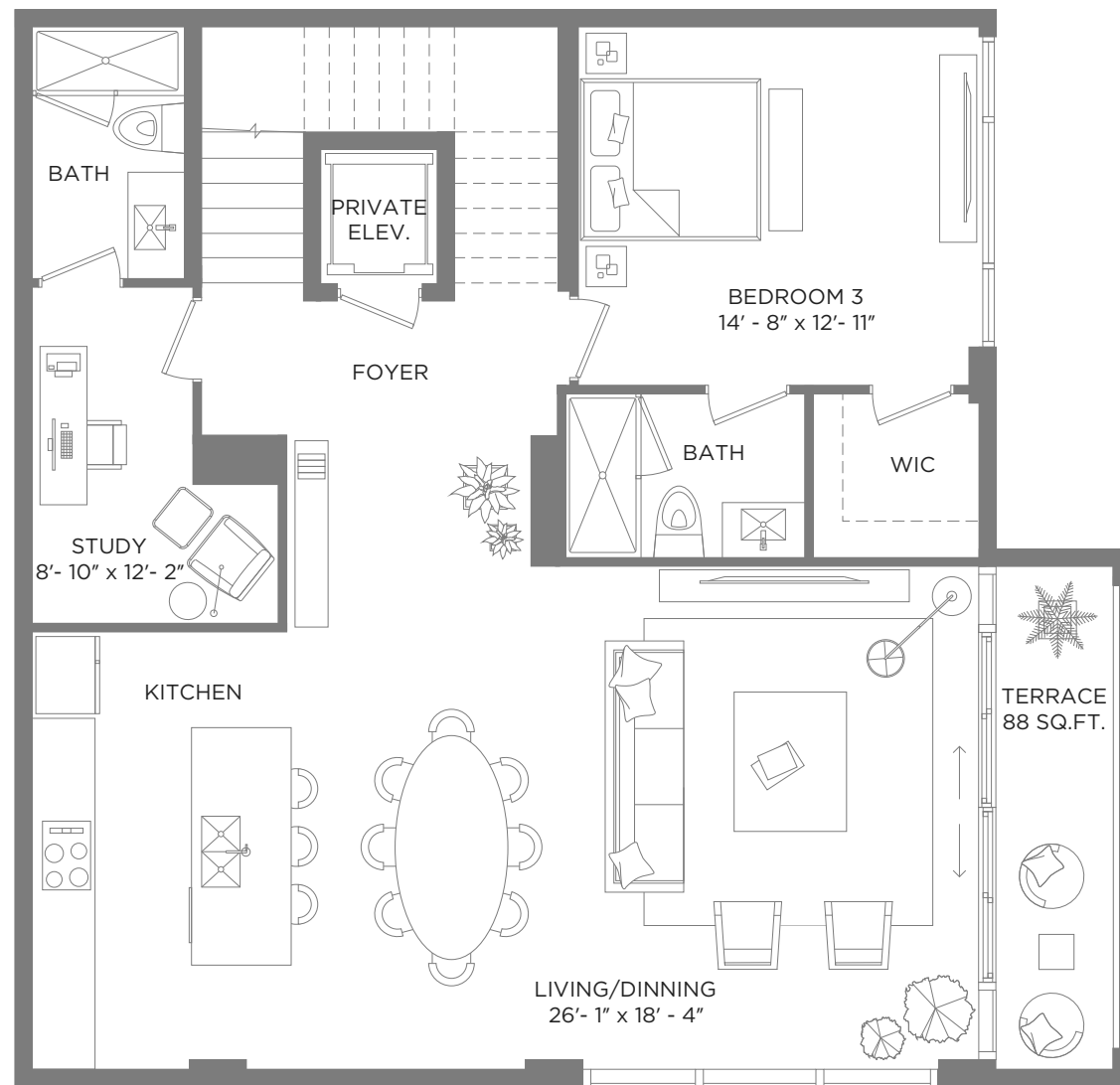
A/C INTERIOR AREA	3,301 SQ.FT.	306.67 SQ. M.
TERRACE AREA	1,401 SQ.FT.	130.15 SQ. M.
TOTAL RESIDENCE	4,702 SQ.FT.	436.82 SQ. M.



3<sup>RD</sup> LEVEL



4<sup>TH</sup> LEVEL



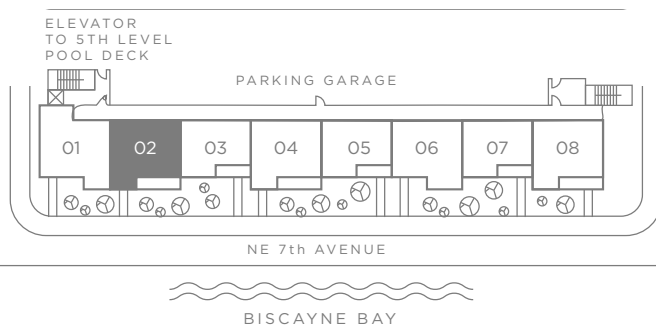
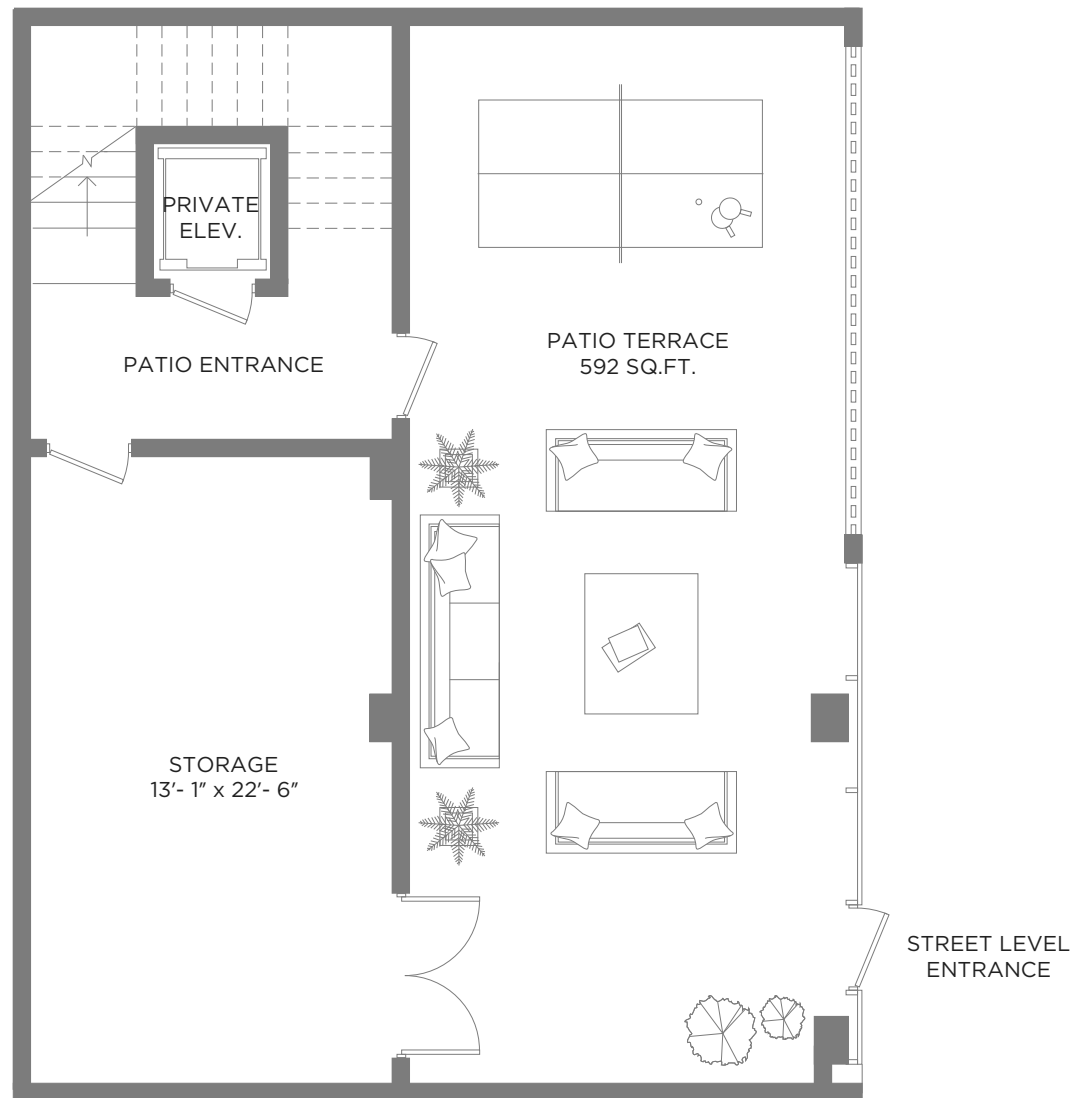
There are various methods for calculating the square footage of a Unit and depending on the method of calculation, the quoted square footage of a Unit in advertising materials may vary from the square footage of a Unit as stated or described in the Prospectus and the Declaration. The dimensions in the Unit shown in these floor plans have been calculated from the exterior boundaries of the exterior walls to the centerline of interior demising walls, including common elements such as structural walls and other interior structural components of the building and in fact vary from the dimensions that would be determined by using the description and definition of the "Unit" set forth in the Prospectus and the Declaration. For your reference, the area of the Unit, determined in accordance with the Unit boundaries as defined in the Prospectus and the Declaration are less than the square footage reflected here. The measurements of room set forth on this floor plan are generally taken at the greatest points of each given room (as if the room were a perfect rectangle) without regard for any cutouts. Accordingly, the area of the actual room will typically smaller than the product obtained by multiplying the stated length times width. All dimensions are approximate and may vary with actual construction. All floor plans are subject to change. The furnishings and décor illustrated are not included with the purchase of the Unit. See Prospectus for information regarding what is offered with the Unit and the calculation of the Unit square footage and dimensions.



1<sup>ST</sup> LEVEL



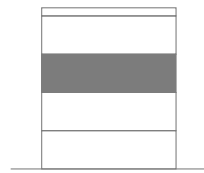
2<sup>ND</sup> LEVEL



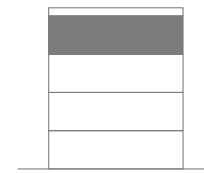
## BAYHOME 02

4BEDROOMS/5.5BATHS/DEN/STUDY/LAUNDRY/STORAGE

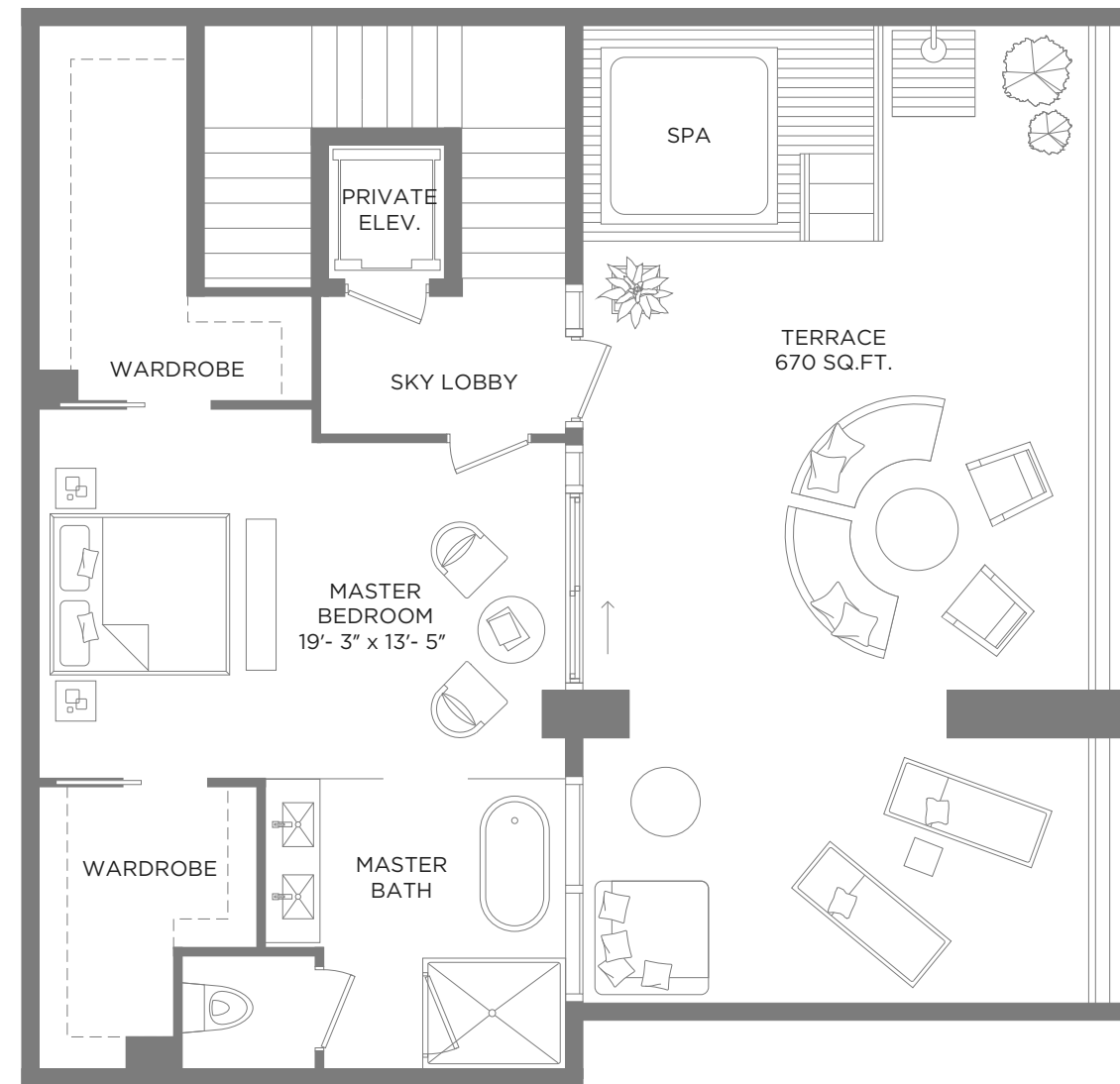
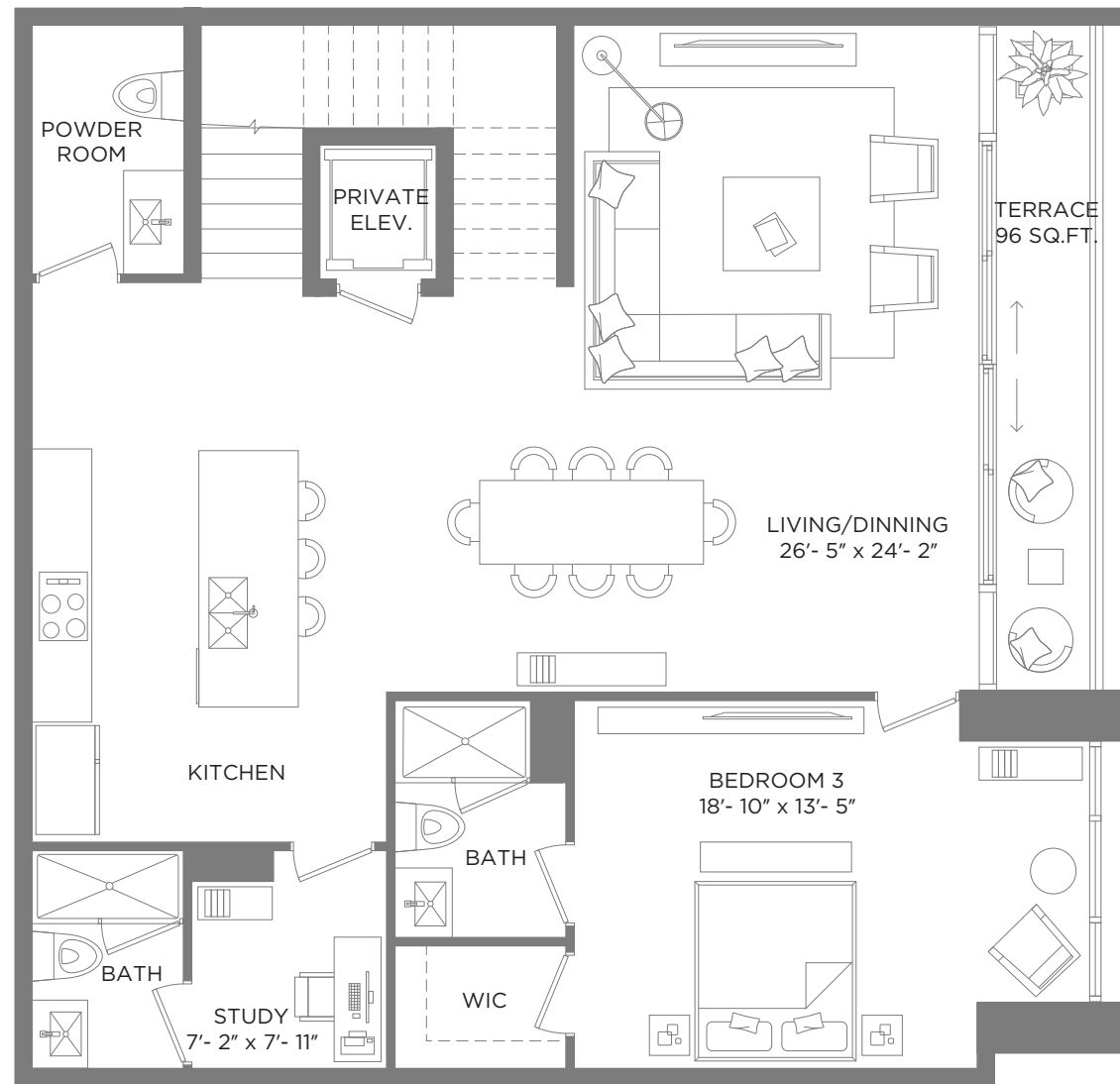
A/C INTERIOR AREA	3,342 SQ.FT.	310.48 SQ. M.
TERRACE AREA	1,468 SQ.FT.	136.38 SQ. M.
TOTAL RESIDENCE	4,810 SQ.FT.	446.86 SQ. M.



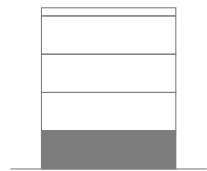
3<sup>RD</sup> LEVEL



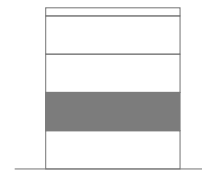
4<sup>TH</sup> LEVEL



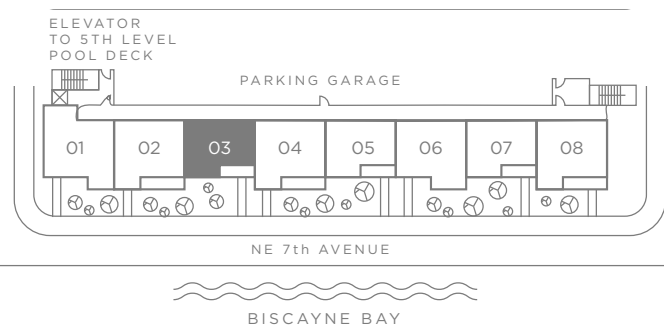
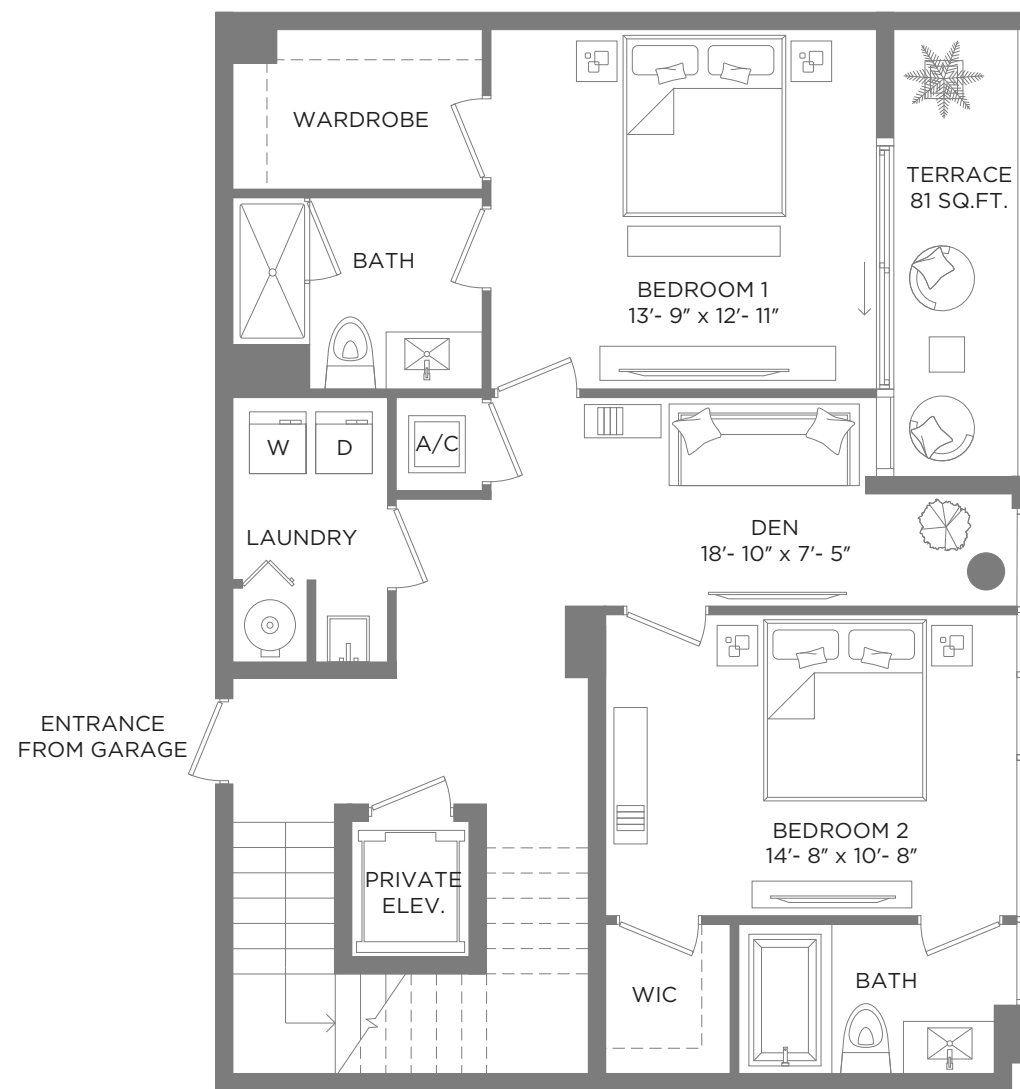
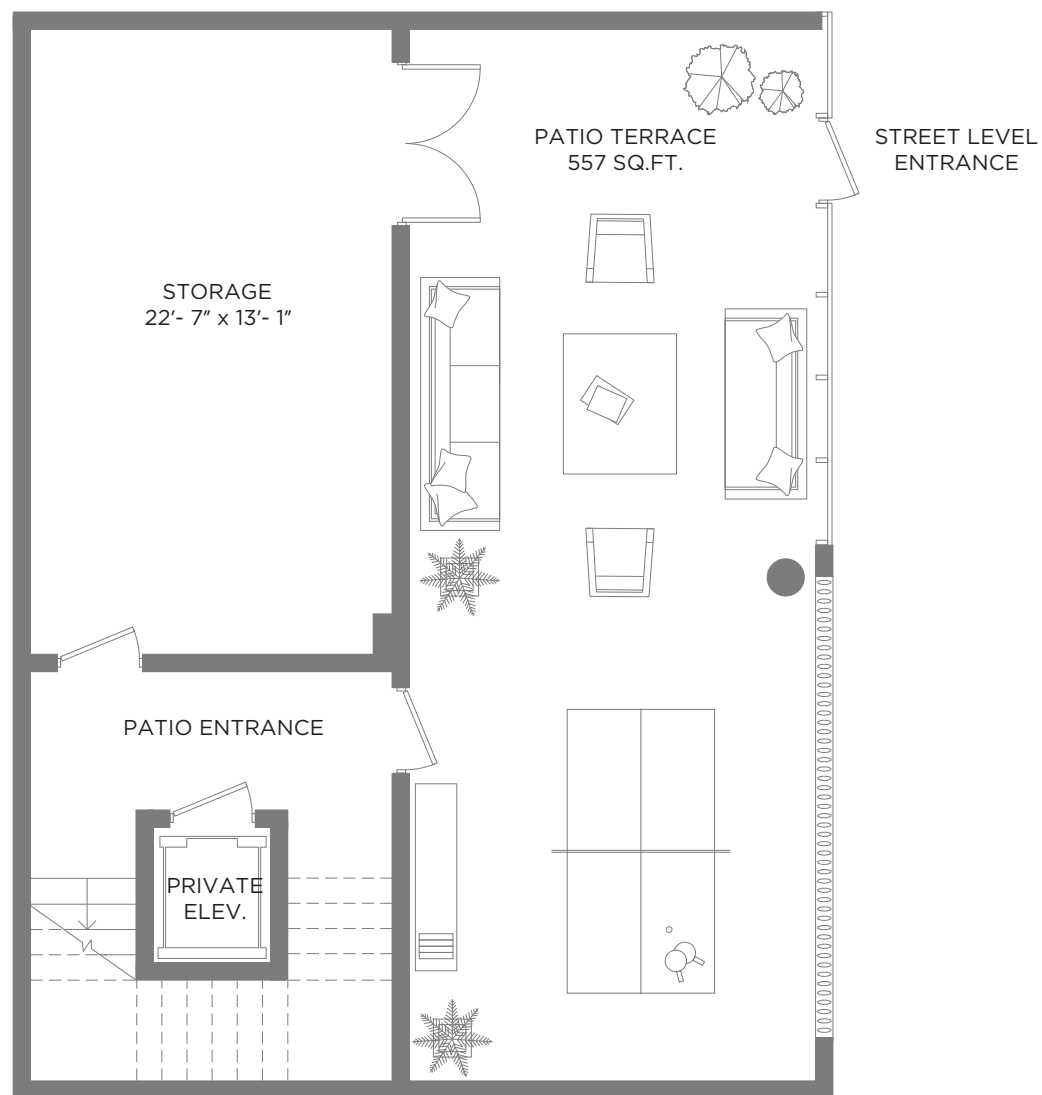
There are various methods for calculating the square footage of a Unit and depending on the method of calculation, the quoted square footage of a Unit in advertising materials may vary from the square footage of a Unit as stated or described in the Prospectus and the Declaration. The dimensions in the Unit shown in these floor plans have been calculated from the exterior boundaries of the exterior walls to the centerline of interior demising walls, including common elements such as structural walls and other interior structural components of the building and in fact vary from the dimensions that would be determined by using the description and definition of the "Unit" set forth in the Prospectus and the Declaration. For your reference, the area of the Unit, determined in accordance with the Unit boundaries as defined in the Prospectus and the Declaration are less than the square footage reflected here. The measurements of room set forth on this floor plan are generally taken at the greatest points of each given room (as if the room were a perfect rectangle) without regard for any cutouts. Accordingly, the area of the actual room will typically smaller than the product obtained by multiplying the stated length times width. All dimensions are approximate and may vary with actual construction. All floor plans are subject to change. The furnishings and décor illustrated are not included with the purchase of the Unit. See Prospectus for information regarding what is offered with the Unit and the calculation of the Unit square footage and dimensions.



1<sup>ST</sup> LEVEL



2<sup>ND</sup> LEVEL



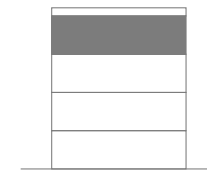
## BAYHOME 03

3 BEDROOMS / 4 BATHS / DEN / STUDY / LAUNDRY / STORAGE

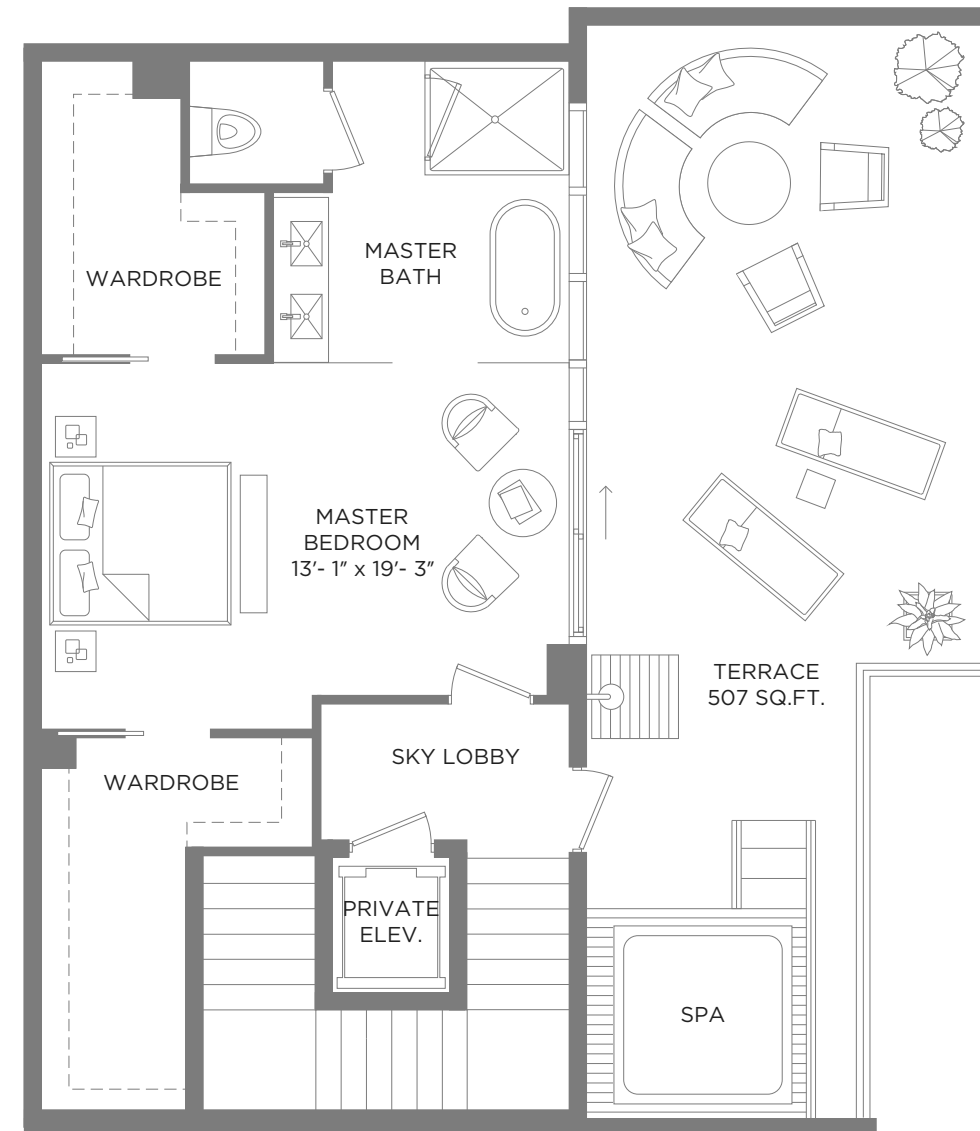
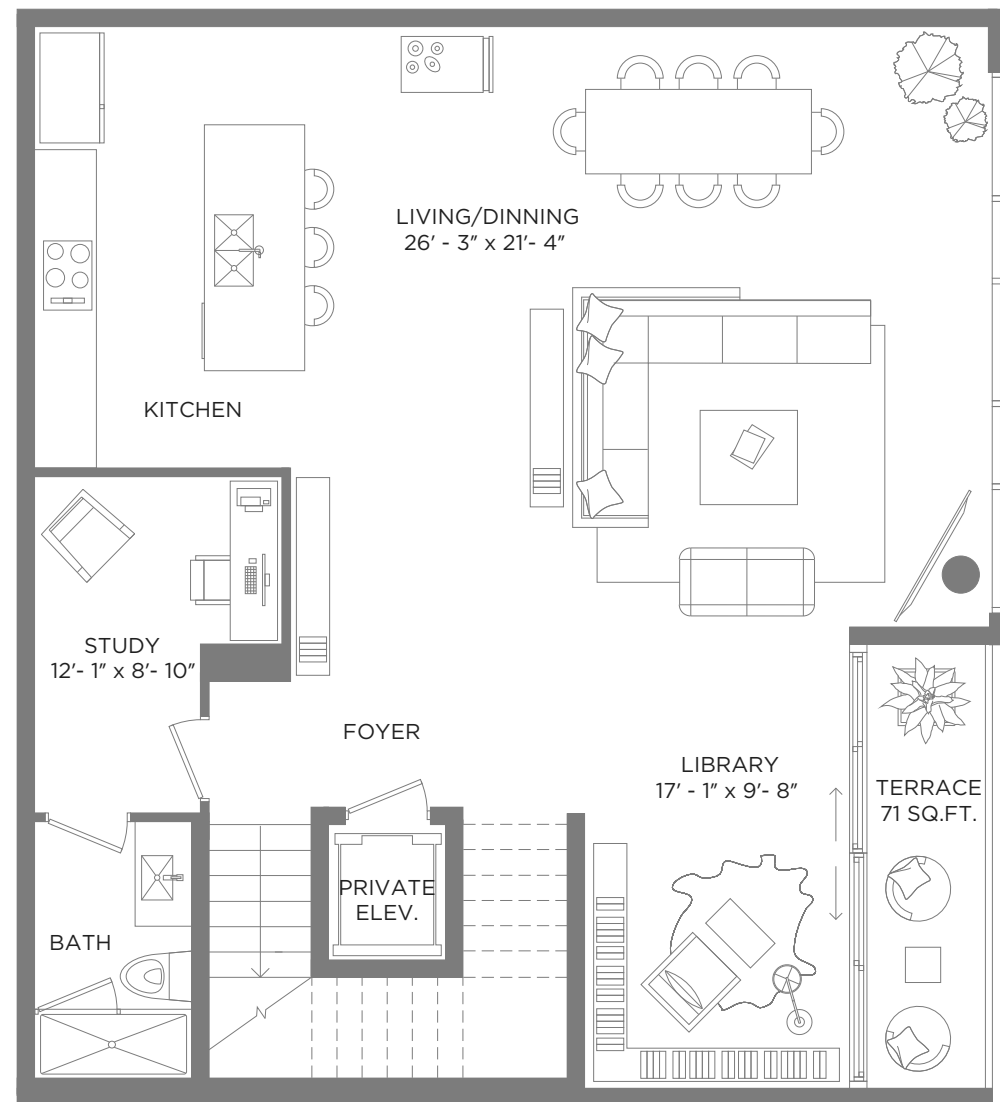
A/C INTERIOR AREA	3,015 SQ.FT.	280.10 SQ. M.
TERRACE AREA	1,215 SQ.FT.	112.87 SQ. M.
TOTAL RESIDENCE	4,230 SQ.FT.	392.97 SQ. M.



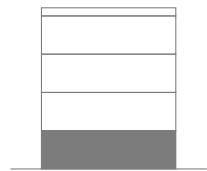
3<sup>RD</sup> LEVEL



4<sup>TH</sup> LEVEL



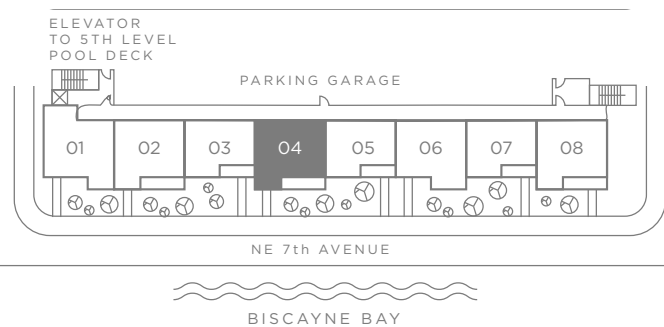
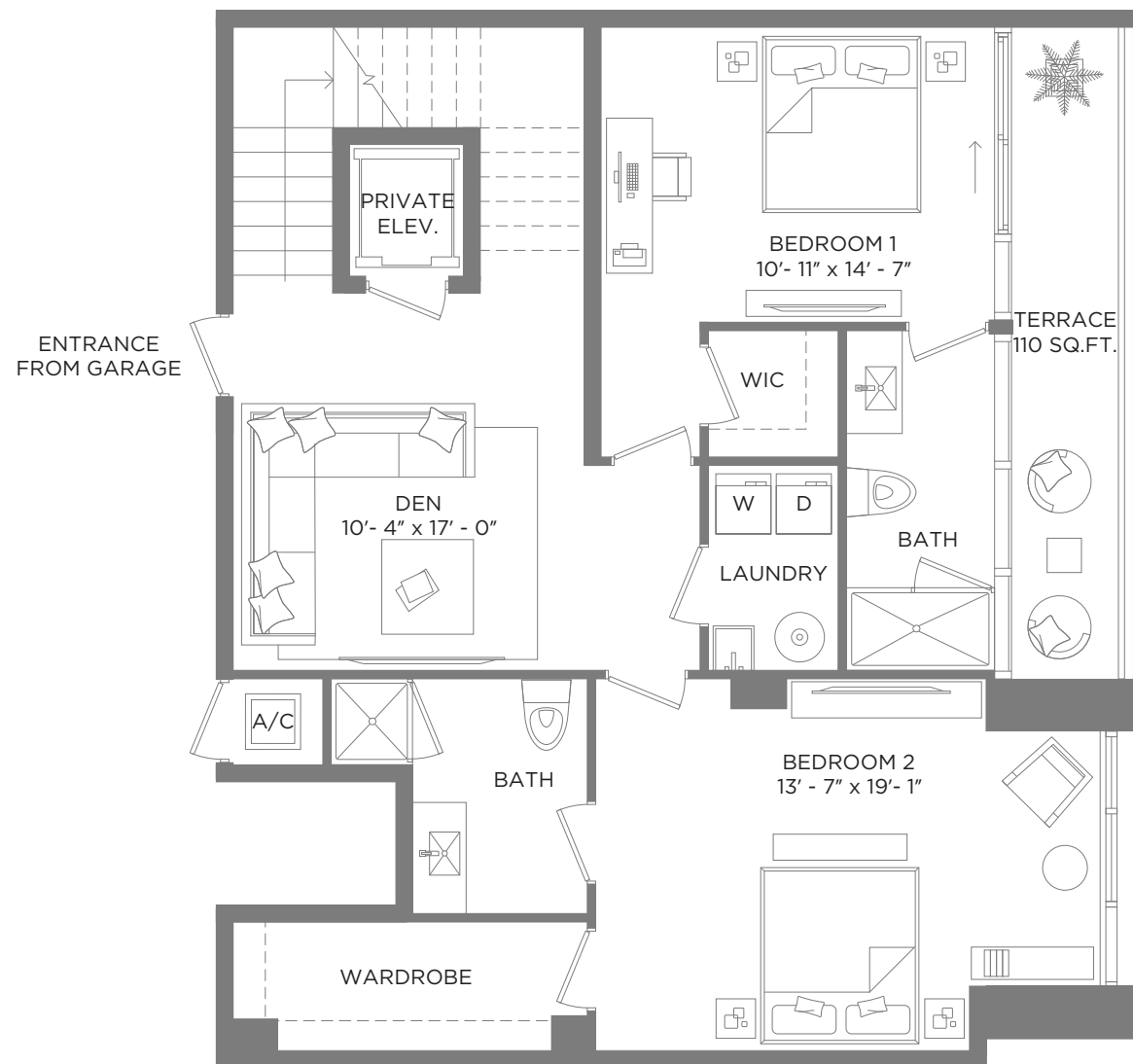
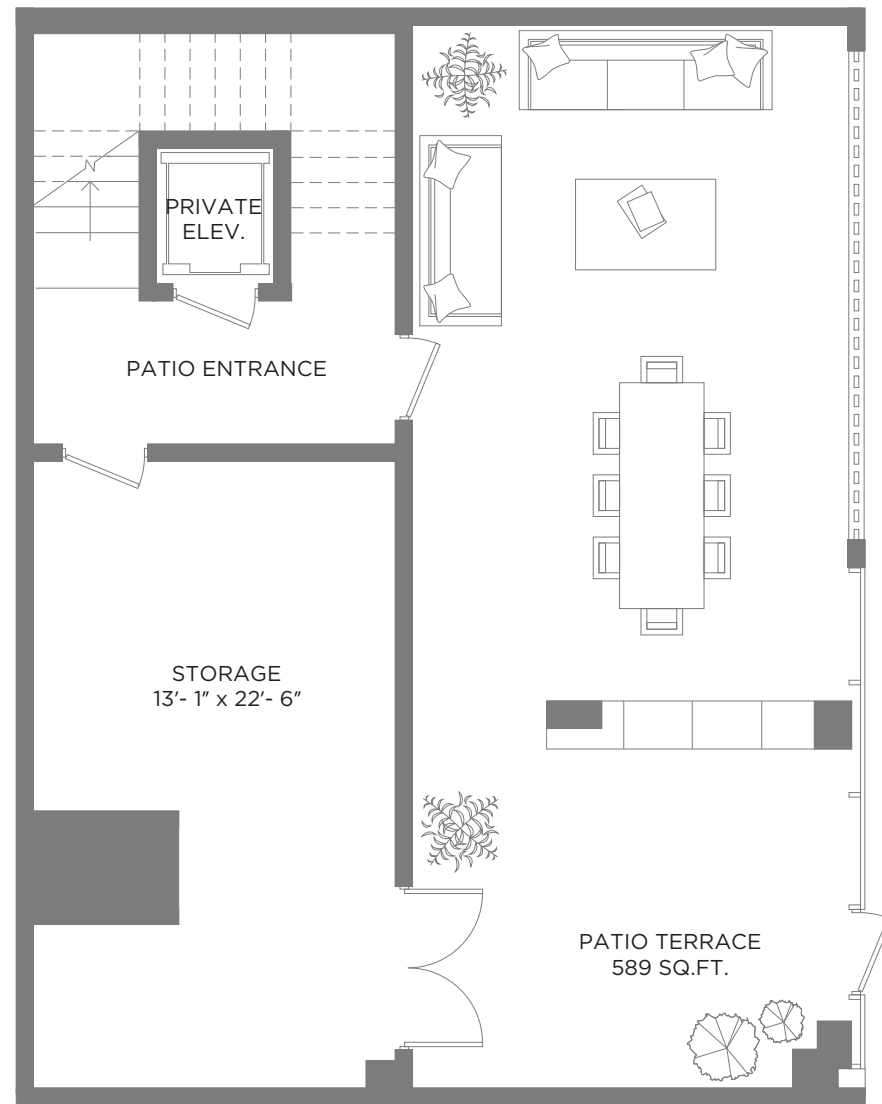
There are various methods for calculating the square footage of a Unit and depending on the method of calculation, the quoted square footage of a Unit in advertising materials may vary from the square footage of a Unit as stated or described in the Prospectus and the Declaration. The dimensions in the Unit shown in these floor plans have been calculated from the exterior boundaries of the exterior walls to the centerline of interior demising walls, including common elements such as structural walls and other interior structural components of the building and in fact vary from the dimensions that would be determined by using the description and definition of the "Unit" set forth in the Prospectus and the Declaration. For your reference, the area of the Unit, determined in accordance with the Unit boundaries as defined in the Prospectus and the Declaration are less than the square footage reflected here. The measurements of room set forth on this floor plan are generally taken at the greatest points of each given room (as if the room were a perfect rectangle) without regard for any cutouts. Accordingly, the area of the actual room will typically smaller than the product obtained by multiplying the stated length times width. All dimensions are approximate and may vary with actual construction. All floor plans are subject to change. The furnishings and décor illustrated are not included with the purchase of the Unit. See Prospectus for information regarding what is offered with the Unit and the calculation of the Unit square footage and dimensions.



1<sup>ST</sup> LEVEL



2<sup>ND</sup> LEVEL



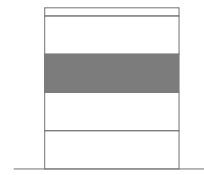
## BAYHOME 04

4 BEDROOMS / 5.5 BATHS / DEN / STUDY / LAUNDRY / STORAGE

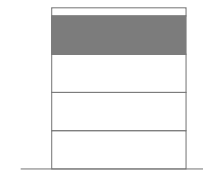
A/C INTERIOR AREA  
TERRACE AREA  
TOTAL RESIDENCE

3,311 SQ.FT.  
1,475 SQ.FT.  
4,786 SQ.FT.

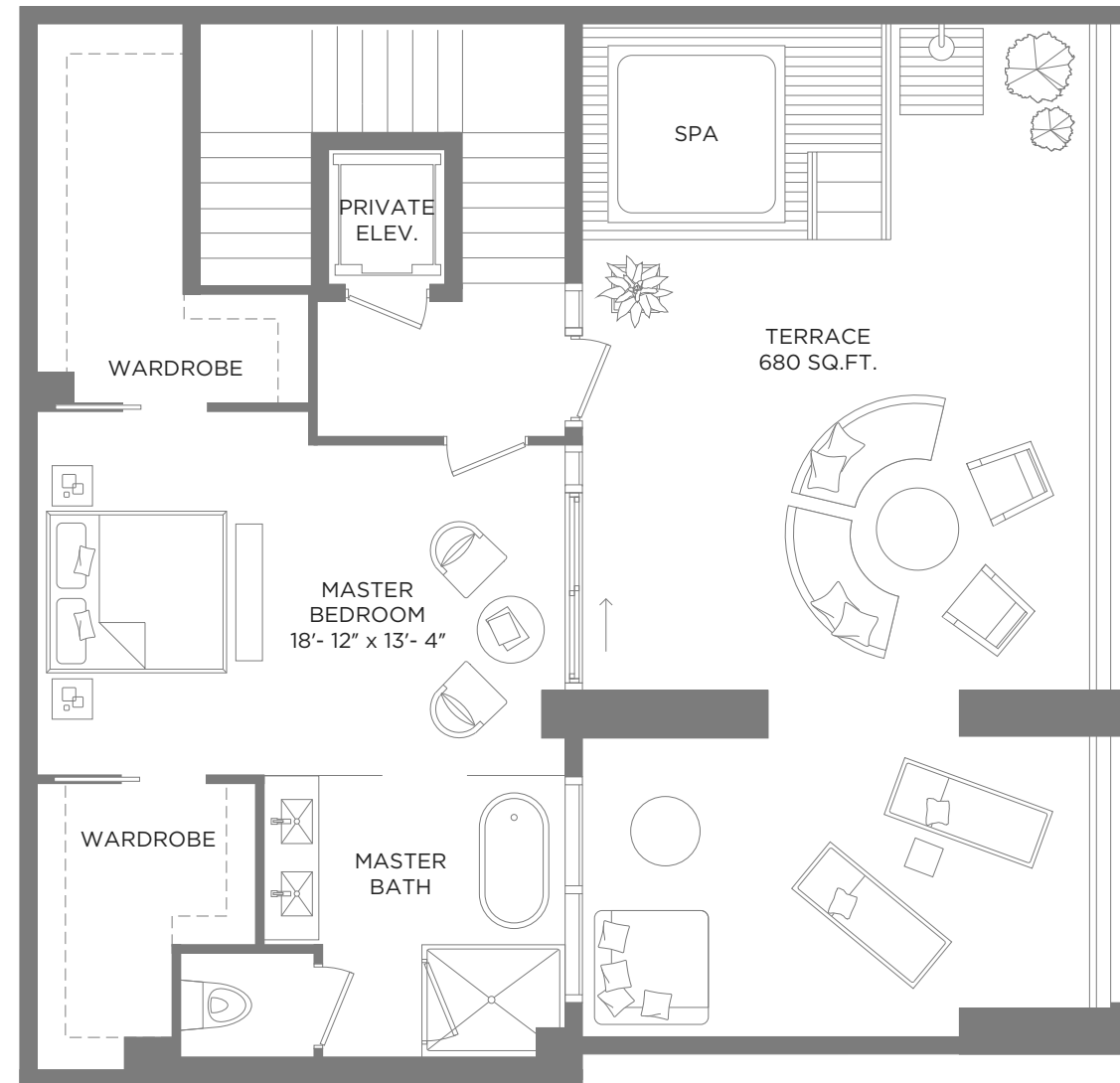
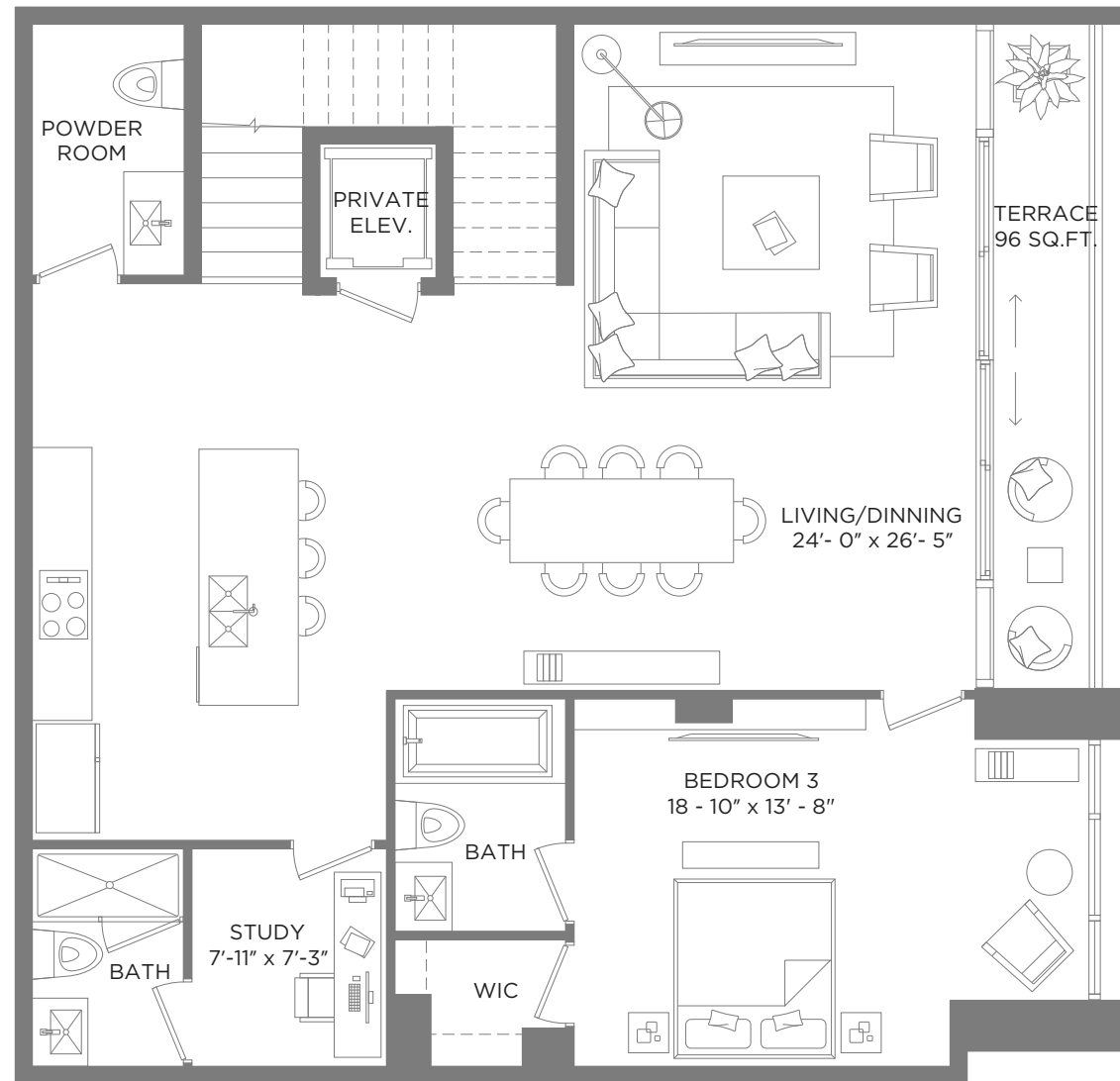
307.60 SQ. M.  
137.03 SQ. M.  
444.63 SQ. M.



3<sup>RD</sup> LEVEL

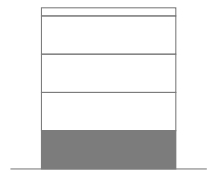


4<sup>TH</sup> LEVEL



There are various methods for calculating the square footage of a Unit and depending on the method of calculation, the quoted square footage of a Unit in advertising materials may vary from the square footage of a Unit as stated or described in the Prospectus and the Declaration. The dimensions in the Unit shown in these floor plans have been calculated from the exterior boundaries of the exterior walls to the centerline of interior demising walls, including common elements such as structural walls and other interior structural components of the building and in fact vary from the dimensions that would be determined by using the description and definition of the "Unit" set forth in the Prospectus and the Declaration. For your reference, the area of the Unit, determined in accordance with the Unit boundaries as defined in the Prospectus and the Declaration are less than the square footage reflected here. The measurements of room set forth on this floor plan are generally taken at the greatest points of each given room (as if the room were a perfect rectangle) without regard for any cutouts. Accordingly, the area of the actual room will typically smaller than the product obtained by multiplying the stated length times width. All dimensions are approximate and may vary with actual construction. All floor plans are subject to change. The furnishings and décor illustrated are not included with the purchase of the Unit. See Prospectus for information regarding what is offered with the Unit and the calculation of the Unit square footage and dimensions.

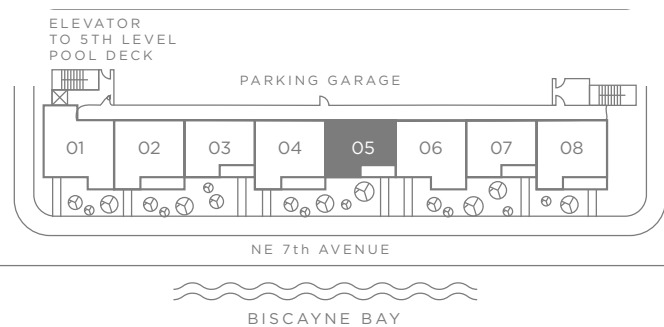
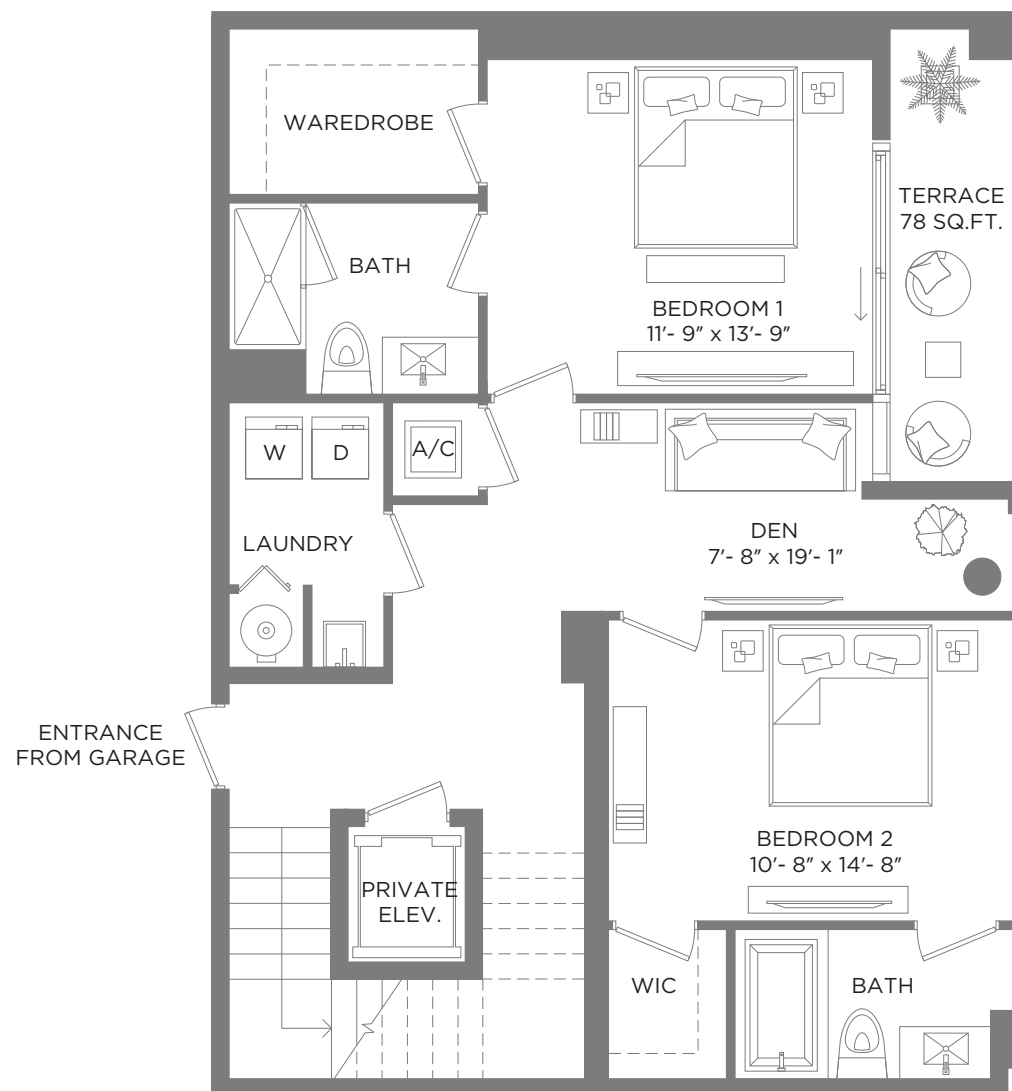
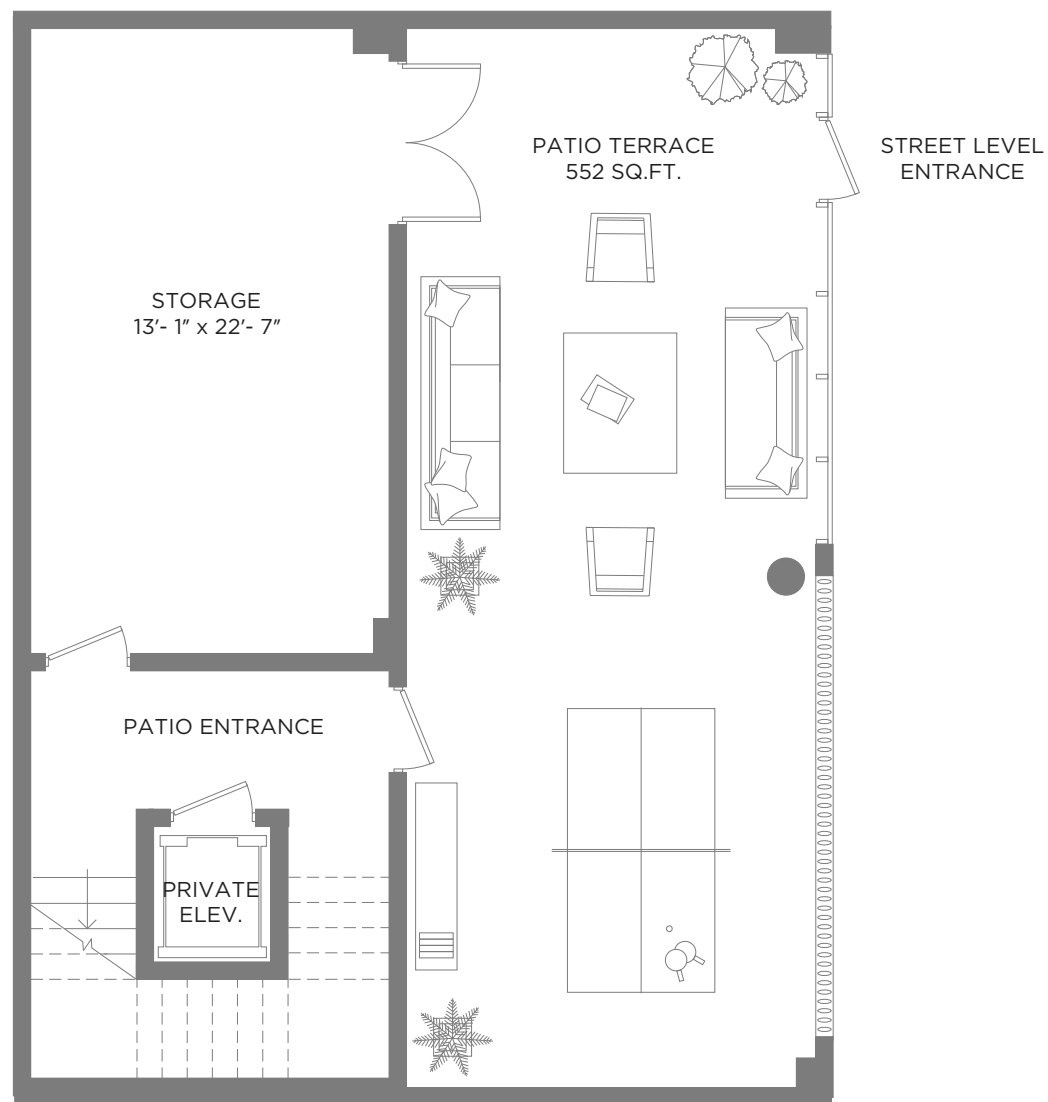




1<sup>ST</sup> LEVEL



2<sup>ND</sup> LEVEL



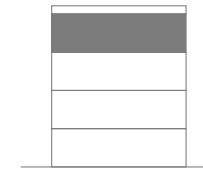
## BAYHOME 05

3 BEDROOMS / 4 BATHS / DEN / STUDY / LAUNDRY / STORAGE

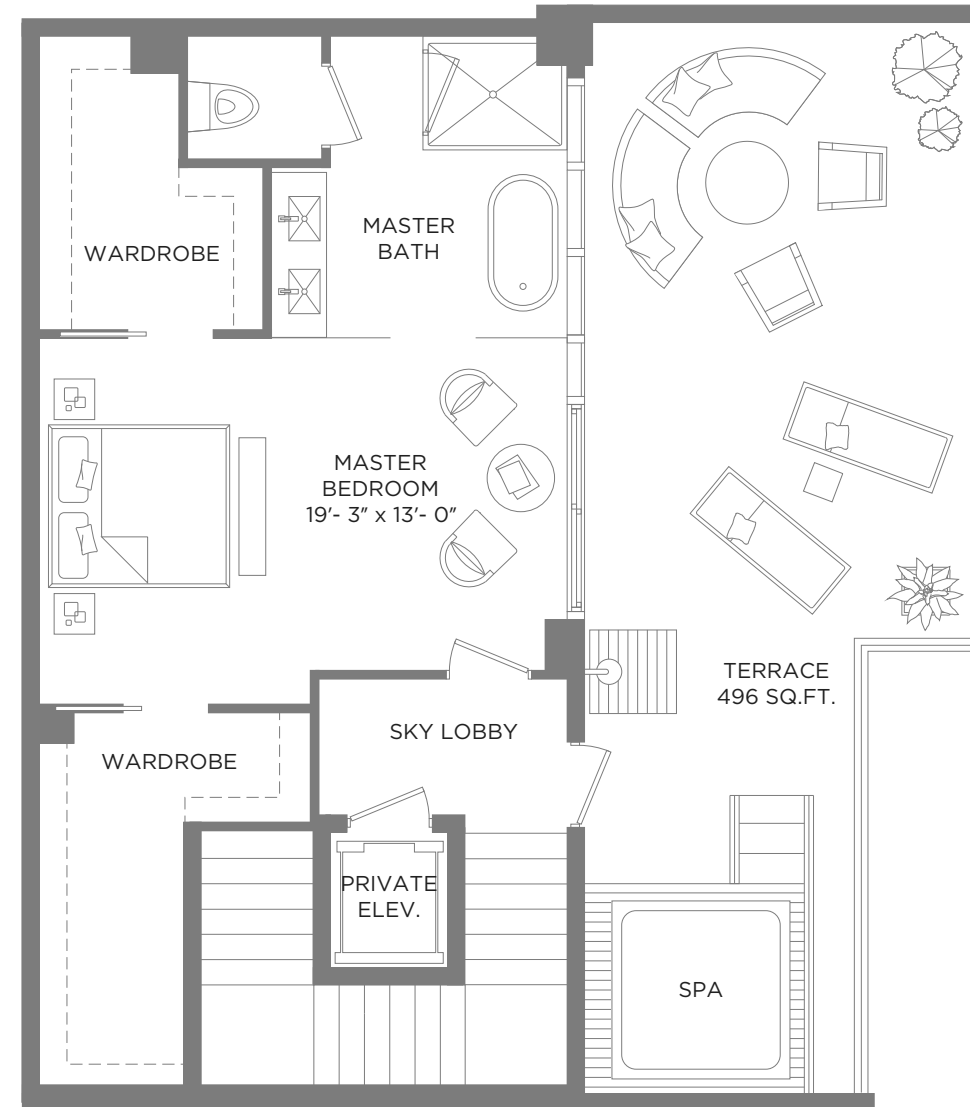
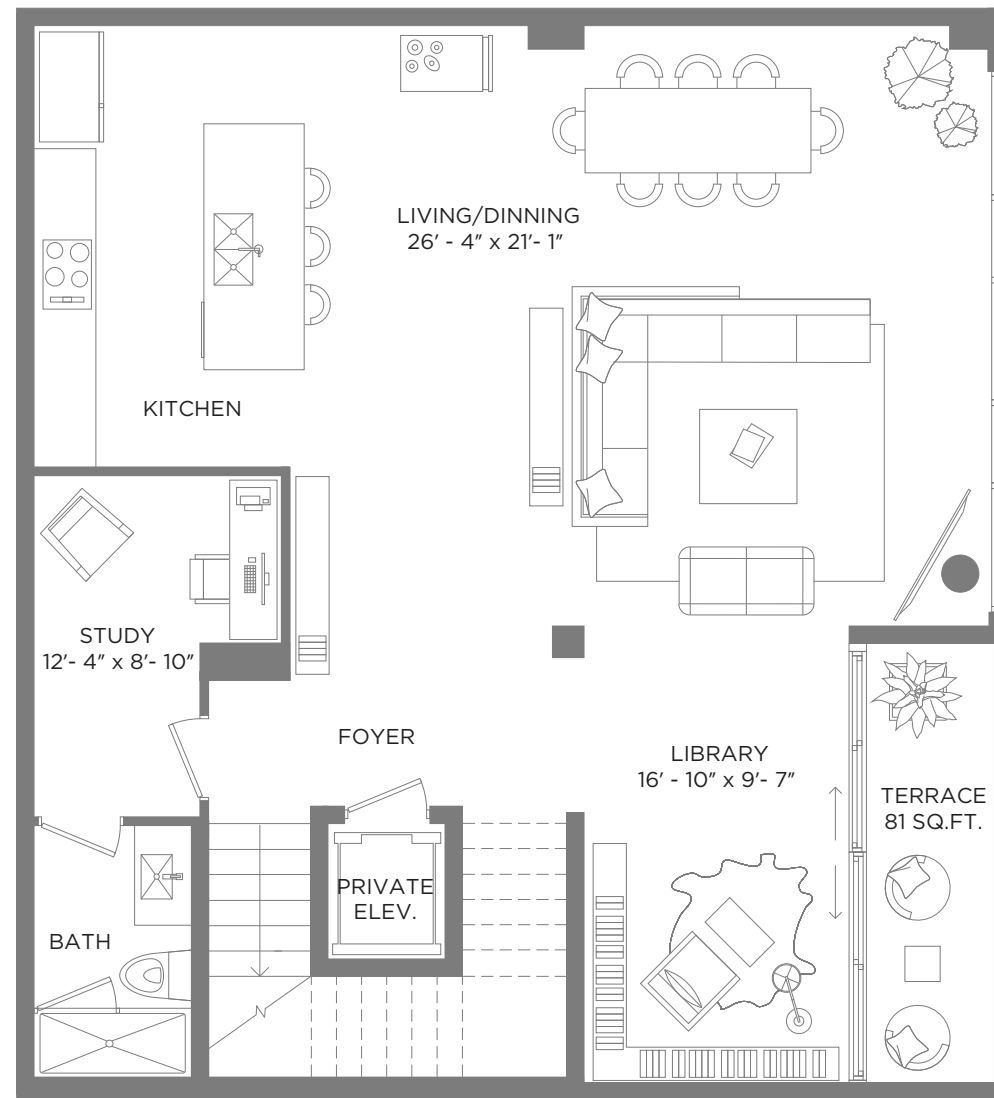
A/C INTERIOR AREA	3,099 SQ.FT.	287.90 SQ. M.
TERRACE AREA	1,207 SQ.FT.	112.13 SQ. M.
TOTAL RESIDENCE	4,306 SQ.FT.	400.03 SQ. M.



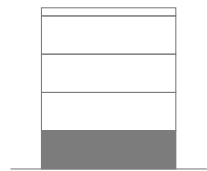
3<sup>RD</sup> LEVEL



4<sup>TH</sup> LEVEL



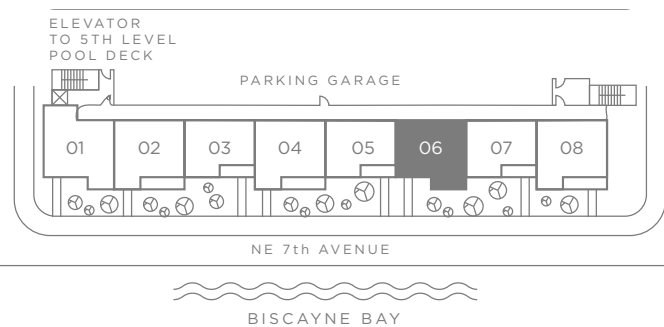
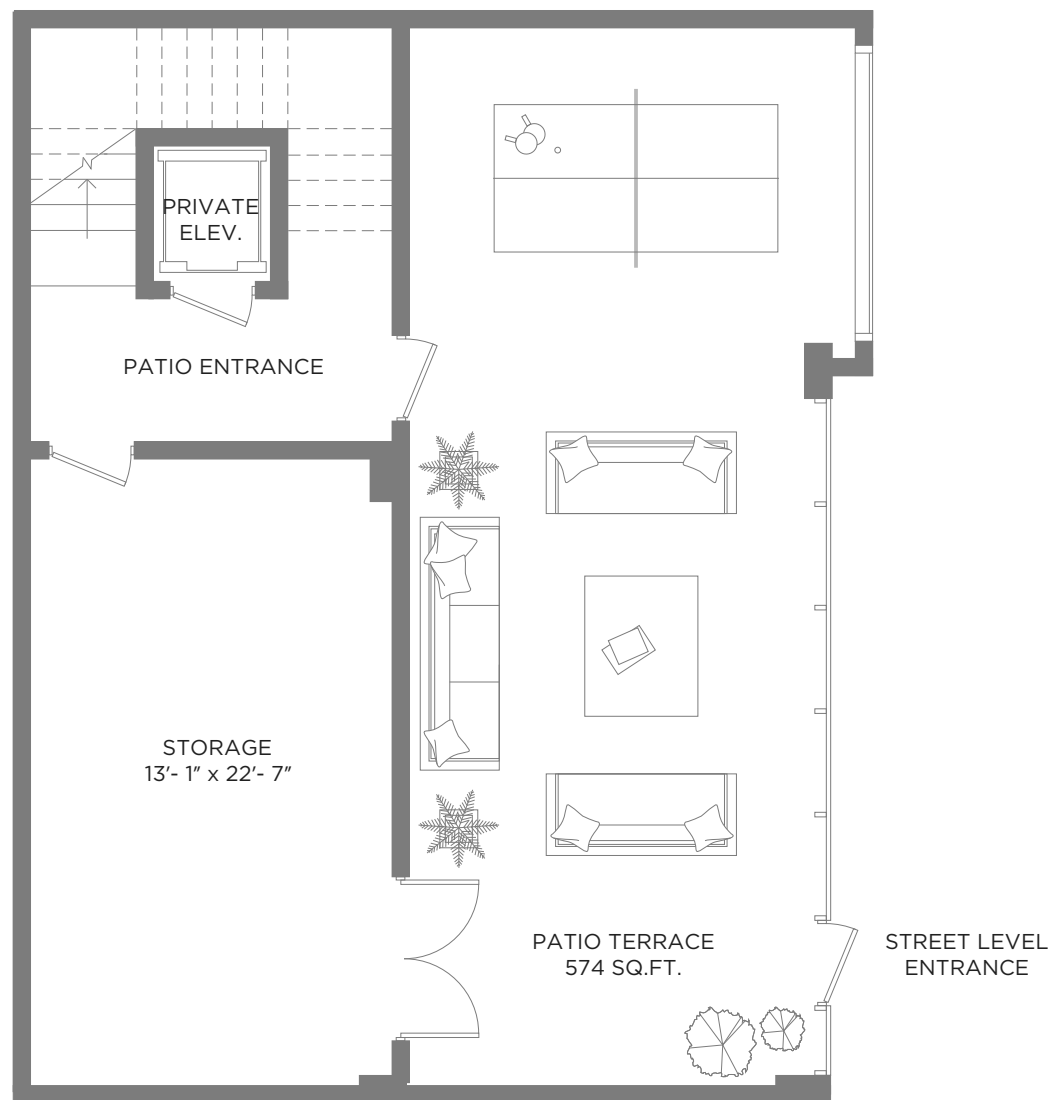
There are various methods for calculating the square footage of a Unit and depending on the method of calculation, the quoted square footage of a Unit in advertising materials may vary from the square footage of a Unit as stated or described in the Prospectus and the Declaration. The dimensions in the Unit shown in these floor plans have been calculated from the exterior boundaries of the exterior walls to the centerline of interior demising walls, including common elements such as structural walls and other interior structural components of the building and in fact vary from the dimensions that would be determined by using the description and definition of the "Unit" set forth in the Prospectus and the Declaration. For your reference, the area of the Unit, determined in accordance with the Unit boundaries as defined in the Prospectus and the Declaration are less than the square footage reflected here. The measurements of room set forth on this floor plan are generally taken at the greatest points of each given room (as if the room were a perfect rectangle) without regard for any cutouts. Accordingly, the area of the actual room will typically smaller than the product obtained by multiplying the stated length times width. All dimensions are approximate and may vary with actual construction. All floor plans are subject to change. The furnishings and décor illustrated are not included with the purchase of the Unit. See Prospectus for information regarding what is offered with the Unit and the calculation of the Unit square footage and dimensions.



1<sup>ST</sup> LEVEL



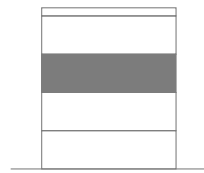
2<sup>ND</sup> LEVEL



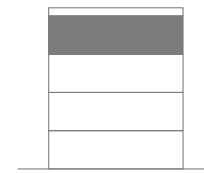
## BAYHOME 06

4 BEDROOMS / 5 BATHS / DEN / STUDY / LAUNDRY / STORAGE

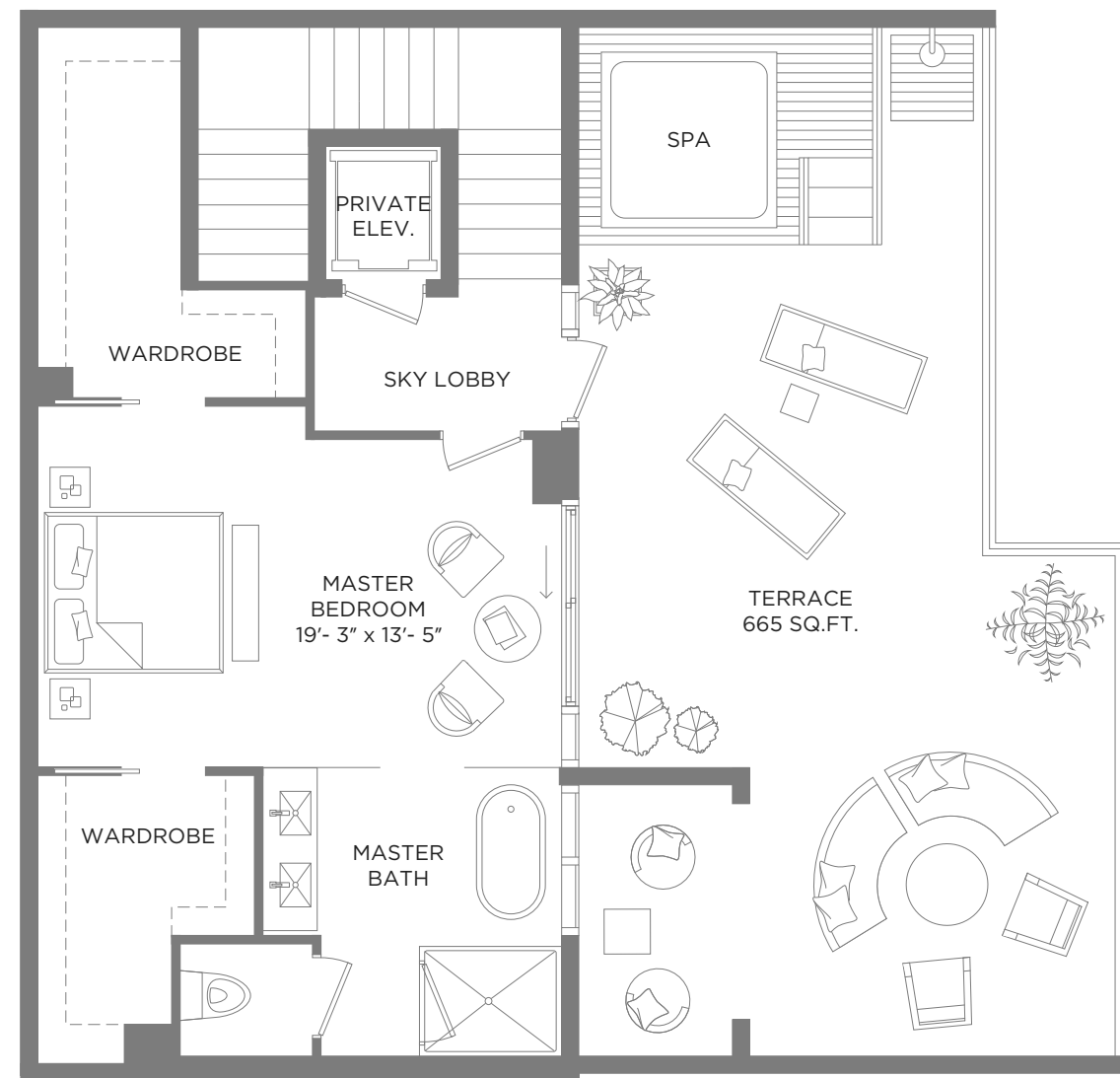
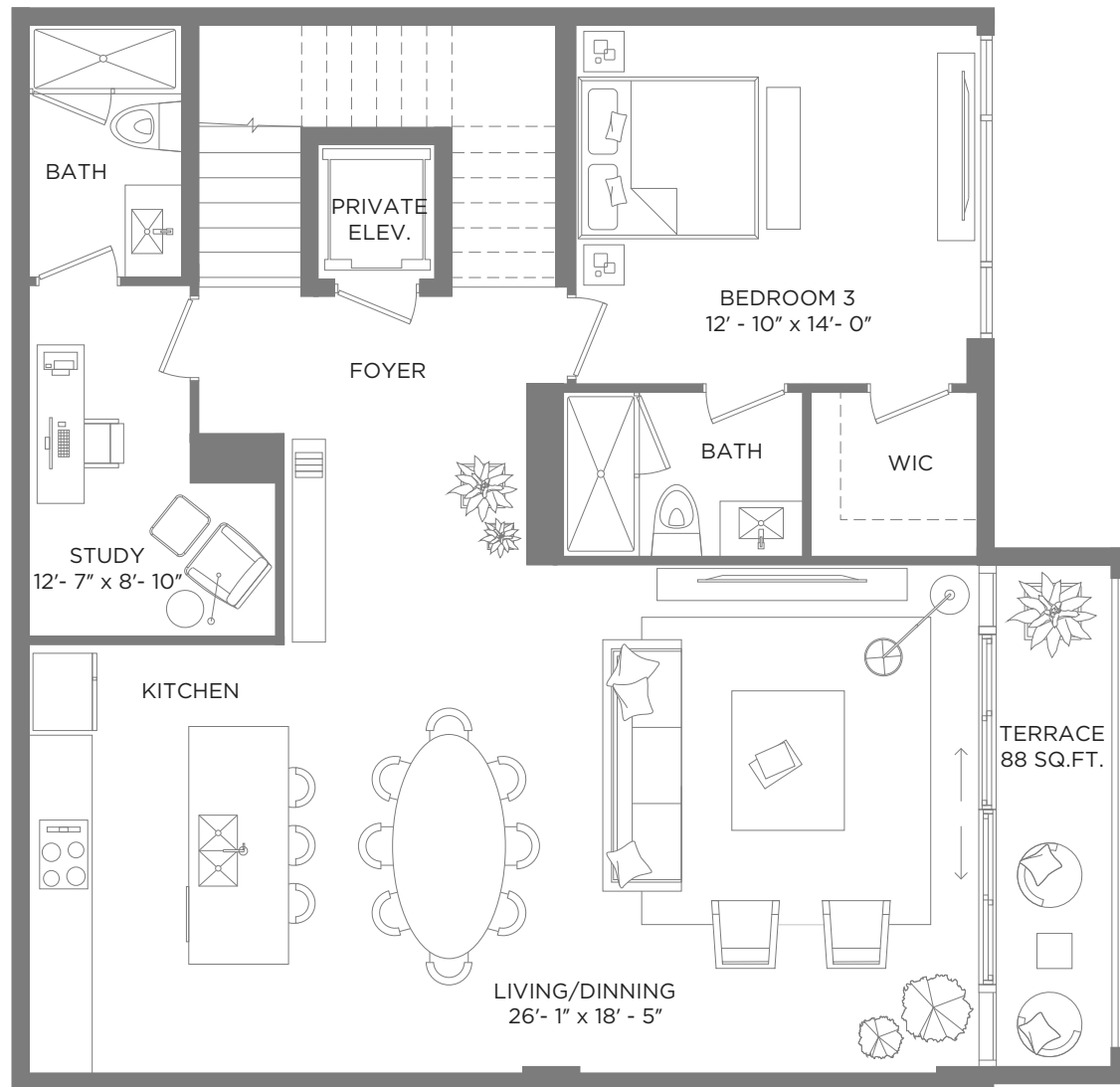
A/C INTERIOR AREA	3,295 SQ.FT.	306.11 SQ. M.
TERRACE AREA	1,379 SQ.FT.	128.11 SQ. M.
TOTAL RESIDENCE	4,674 SQ.FT.	434.22 SQ. M.



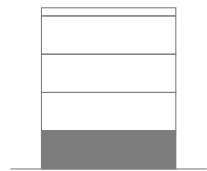
3<sup>RD</sup> LEVEL



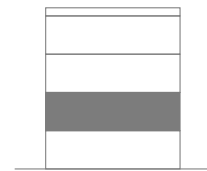
4<sup>TH</sup> LEVEL



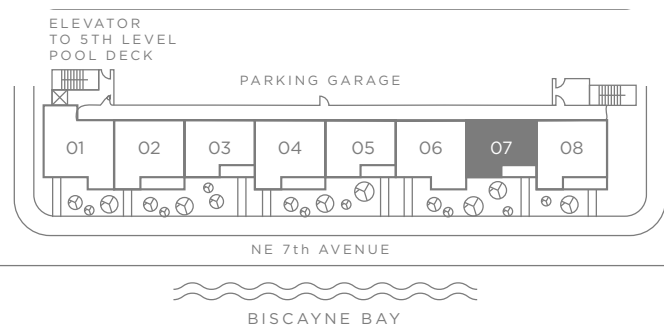
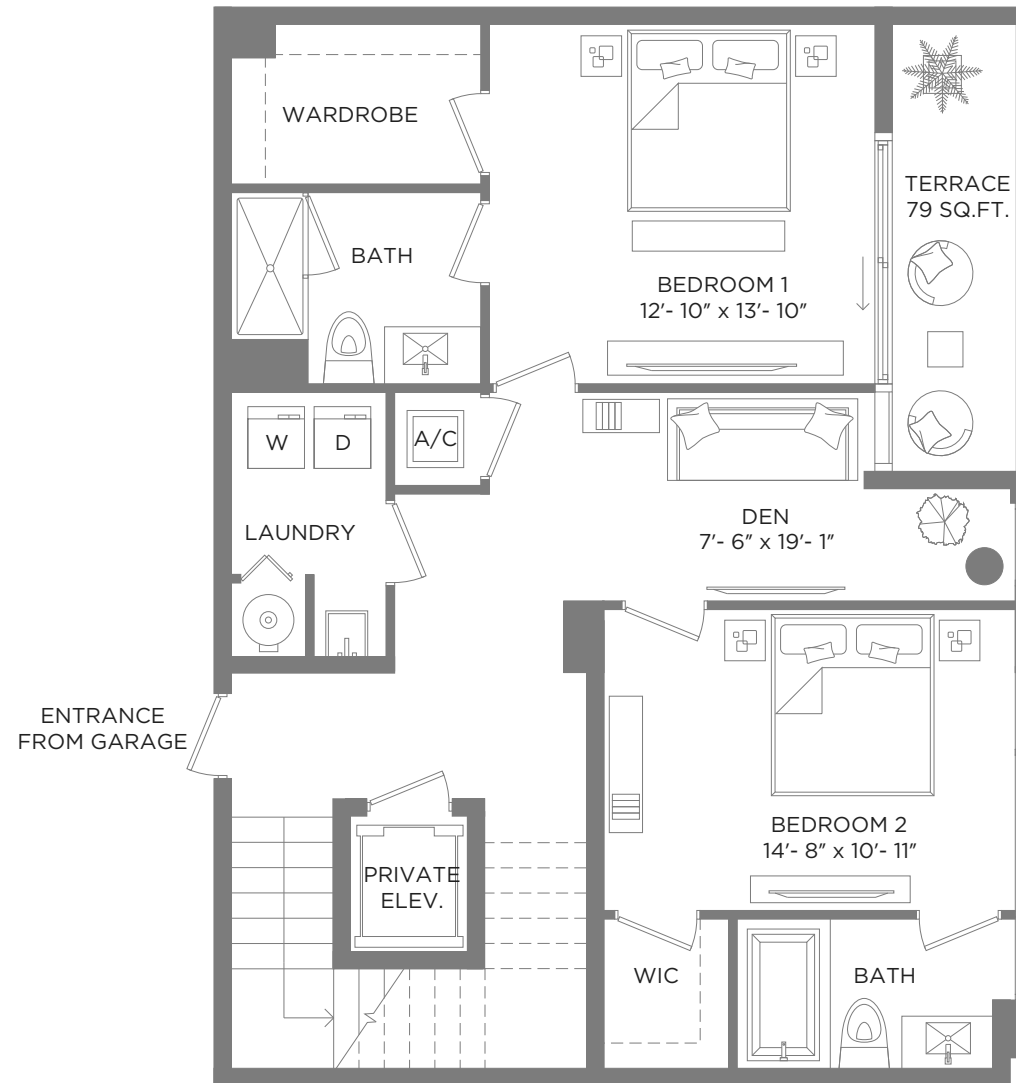
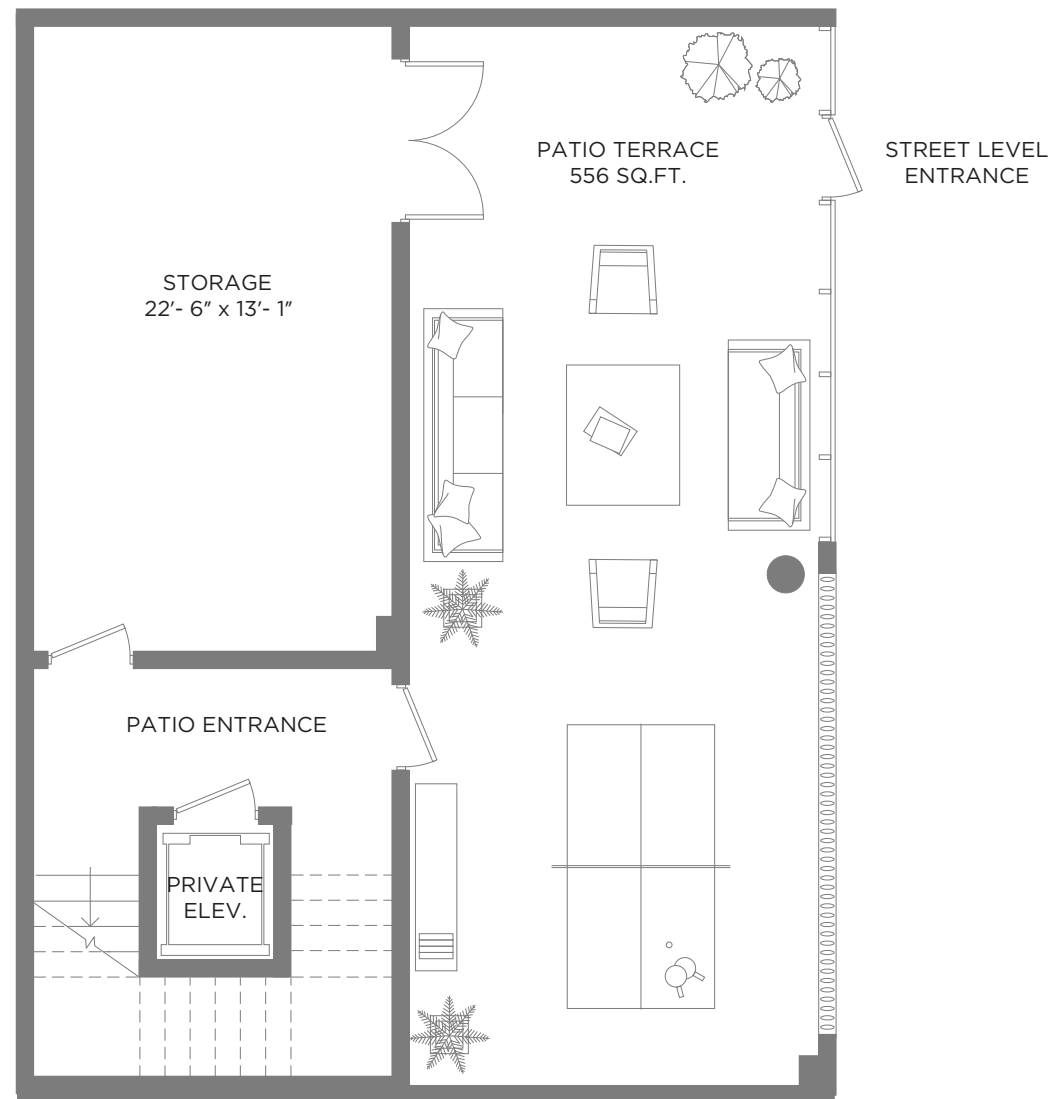
There are various methods for calculating the square footage of a Unit and depending on the method of calculation, the quoted square footage of a Unit in advertising materials may vary from the square footage of a Unit as stated or described in the Prospectus and the Declaration. The dimensions in the Unit shown in these floor plans have been calculated from the exterior boundaries of the exterior walls to the centerline of interior demising walls, including common elements such as structural walls and other interior structural components of the building and in fact vary from the dimensions that would be determined by using the description and definition of the "Unit" set forth in the Prospectus and the Declaration. For your reference, the area of the Unit, determined in accordance with the Unit boundaries as defined in the Prospectus and the Declaration are less than the square footage reflected here. The measurements of room set forth on this floor plan are generally taken at the greatest points of each given room (as if the room were a perfect rectangle) without regard for any cutouts. Accordingly, the area of the actual room will typically smaller than the product obtained by multiplying the stated length times width. All dimensions are approximate and may vary with actual construction. All floor plans are subject to change. The furnishings and décor illustrated are not included with the purchase of the Unit. See Prospectus for information regarding what is offered with the Unit and the calculation of the Unit square footage and dimensions.



1<sup>ST</sup> LEVEL



2<sup>ND</sup> LEVEL



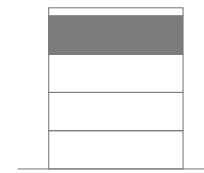
## BAYHOME 07

3 BEDROOMS / 4 BATHS / DEN / STUDY / LAUNDRY / STORAGE

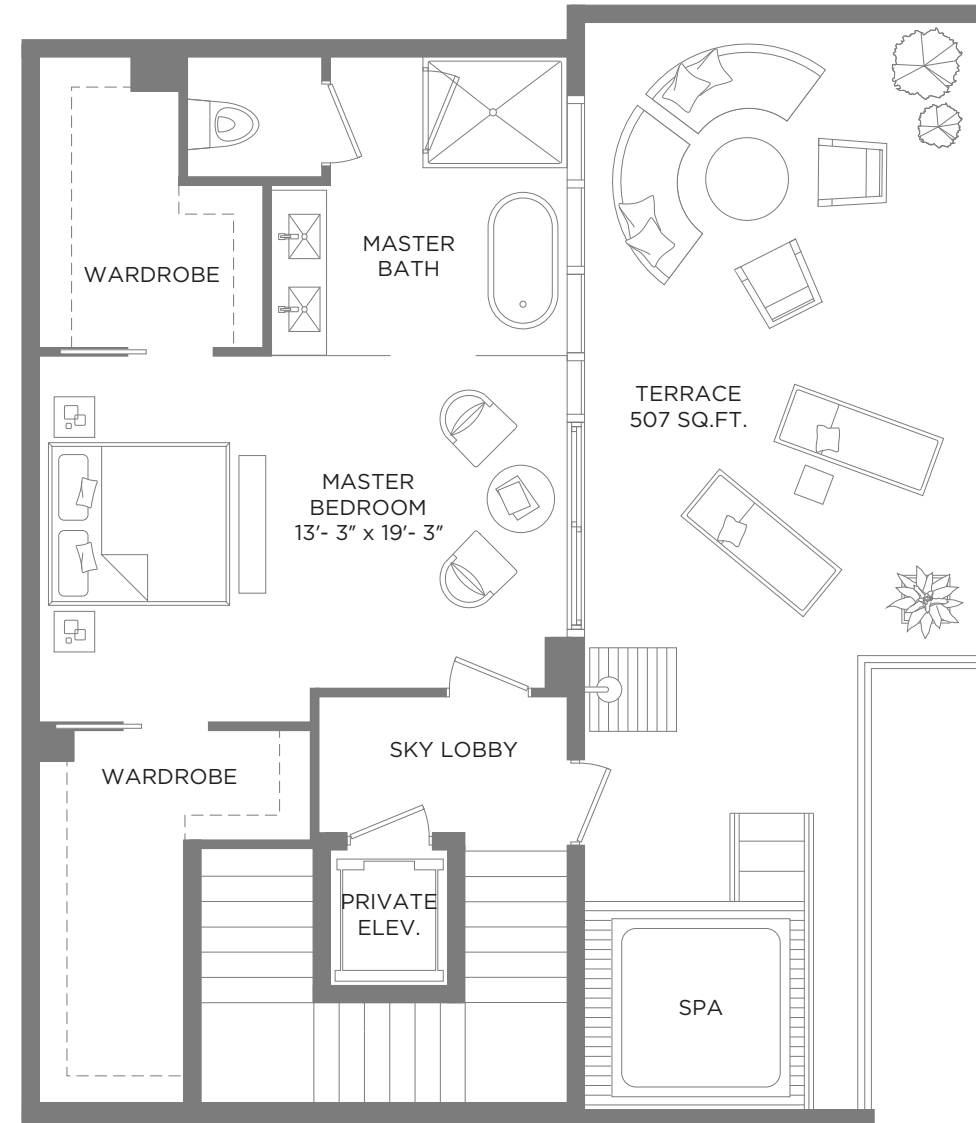
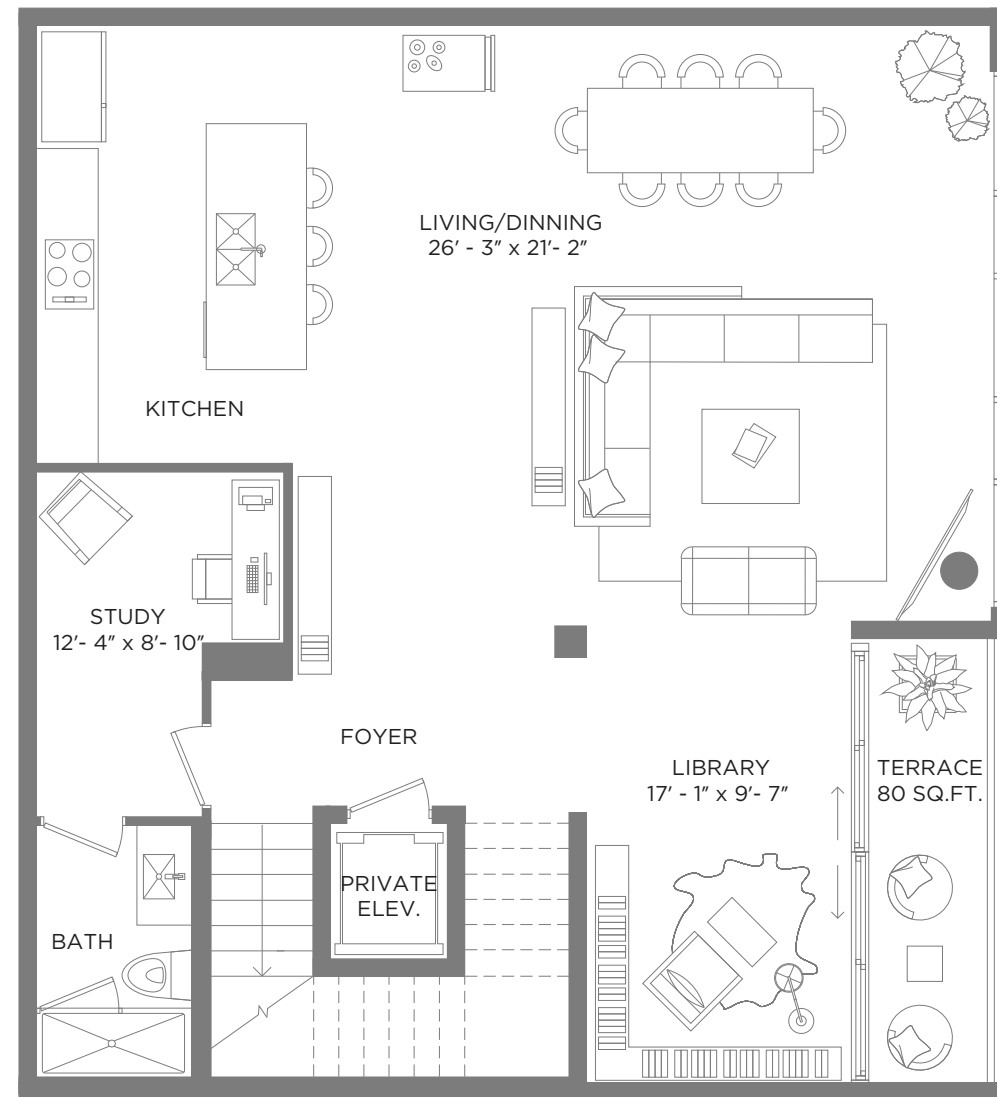
A/C INTERIOR AREA	3,128 SQ.FT.	290.60 SQ. M.
TERRACE AREA	1,223 SQ.FT.	113.62 SQ. M.
TOTAL RESIDENCE	4,351 SQ.FT.	404.22 SQ. M.



3<sup>RD</sup> LEVEL



4<sup>TH</sup> LEVEL



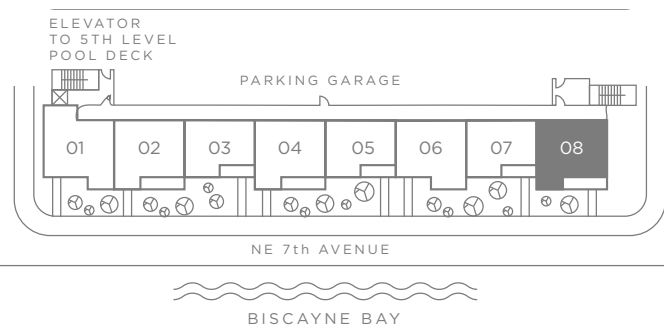
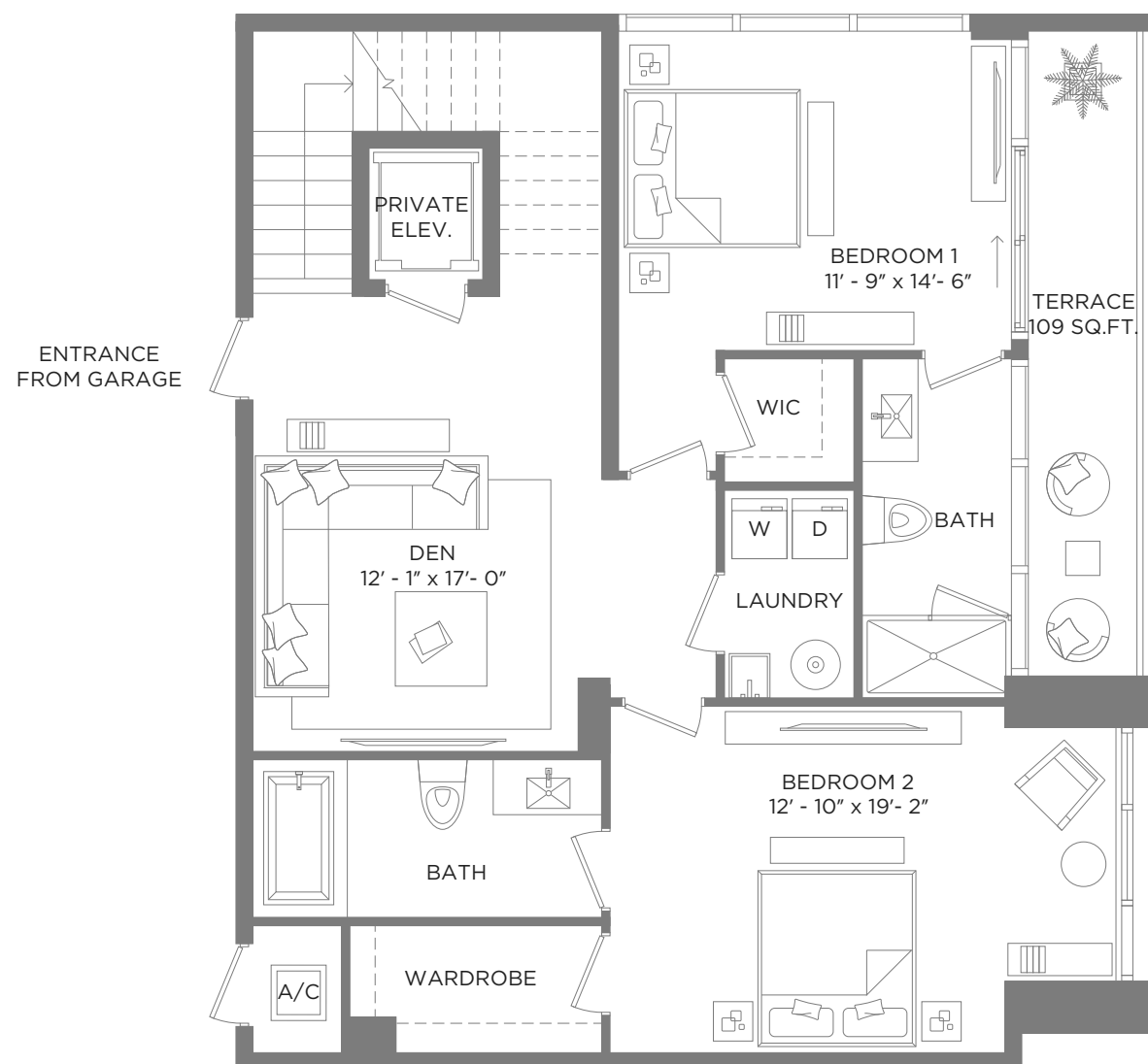
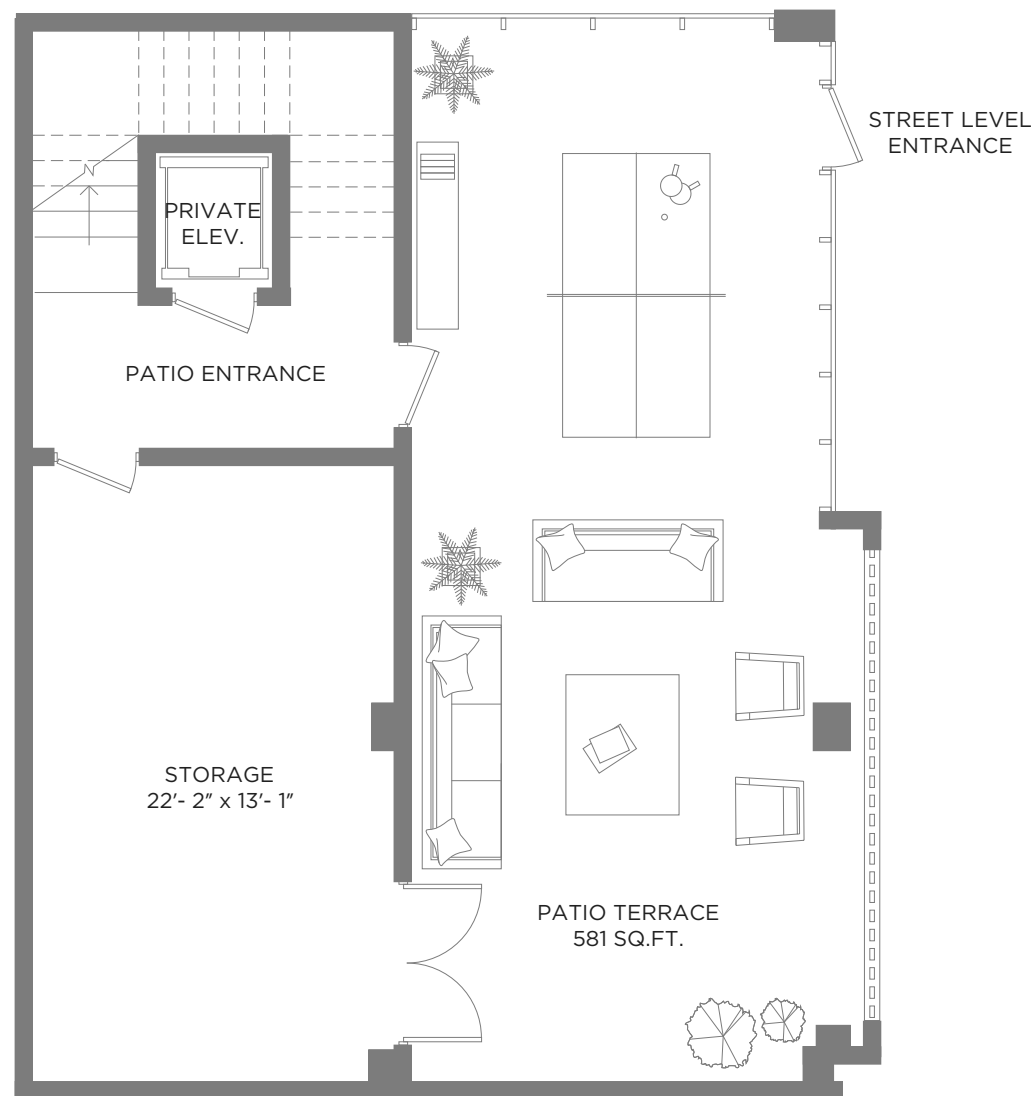
There are various methods for calculating the square footage of a Unit and depending on the method of calculation, the quoted square footage of a Unit in advertising materials may vary from the square footage of a Unit as stated or described in the Prospectus and the Declaration. The dimensions in the Unit shown in these floor plans have been calculated from the exterior boundaries of the exterior walls to the centerline of interior demising walls, including common elements such as structural walls and other interior structural components of the building and in fact vary from the dimensions that would be determined by using the description and definition of the "Unit" set forth in the Prospectus and the Declaration. For your reference, the area of the Unit, determined in accordance with the Unit boundaries as defined in the Prospectus and the Declaration are less than the square footage reflected here. The measurements of room set forth on this floor plan are generally taken at the greatest points of each given room (as if the room were a perfect rectangle) without regard for any cutouts. Accordingly, the area of the actual room will typically smaller than the product obtained by multiplying the stated length times width. All dimensions are approximate and may vary with actual construction. All floor plans are subject to change. The furnishings and décor illustrated are not included with the purchase of the Unit. See Prospectus for information regarding what is offered with the Unit and the calculation of the Unit square footage and dimensions.



1<sup>ST</sup> LEVEL



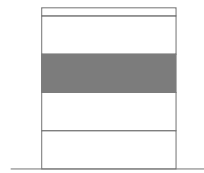
2<sup>ND</sup> LEVEL



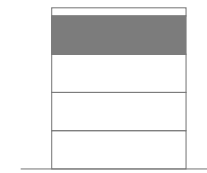
## BAYHOME 08

4 BEDROOMS / 5.5 BATHS / DEN / STUDY / LAUNDRY / STORAGE

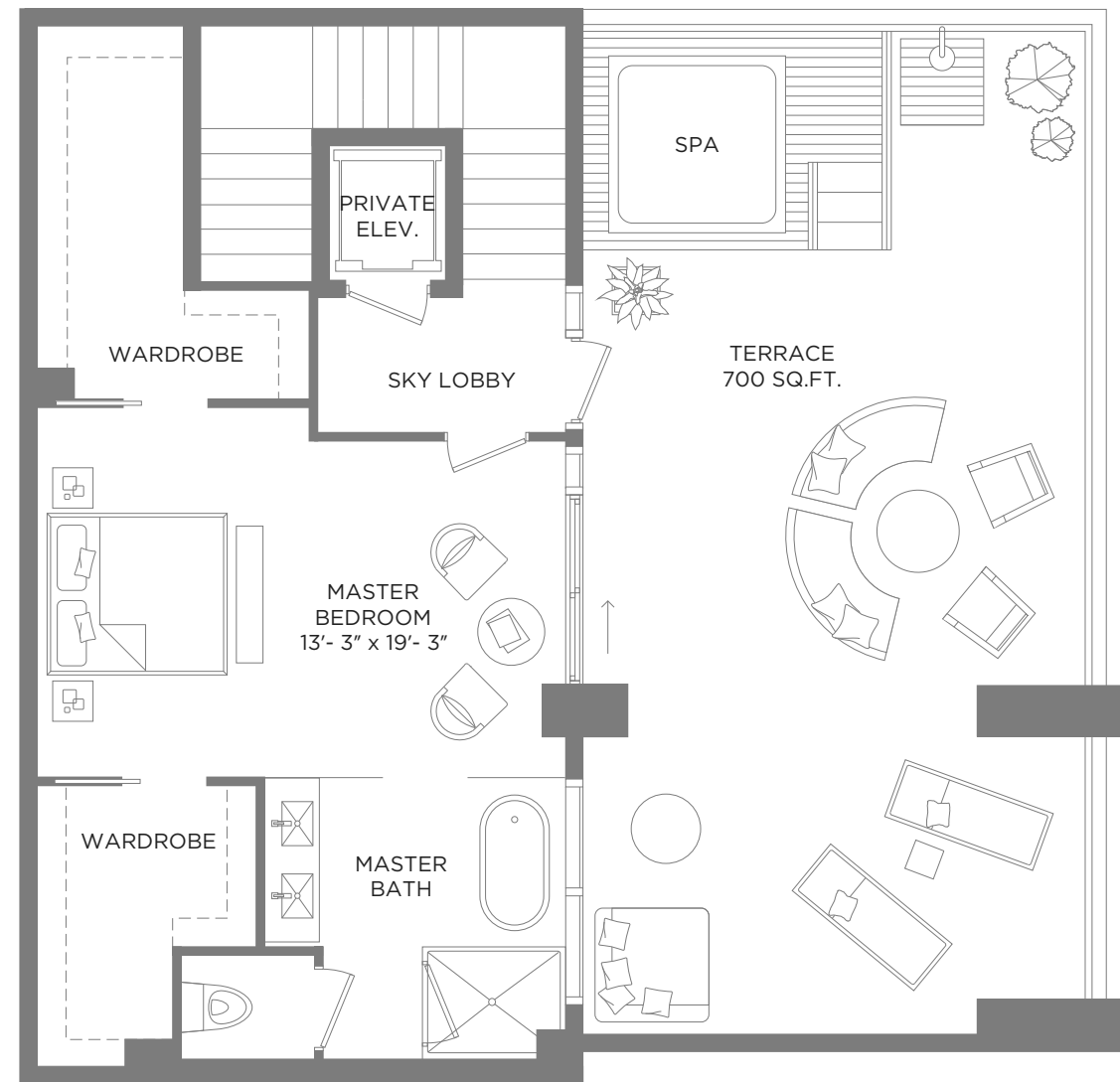
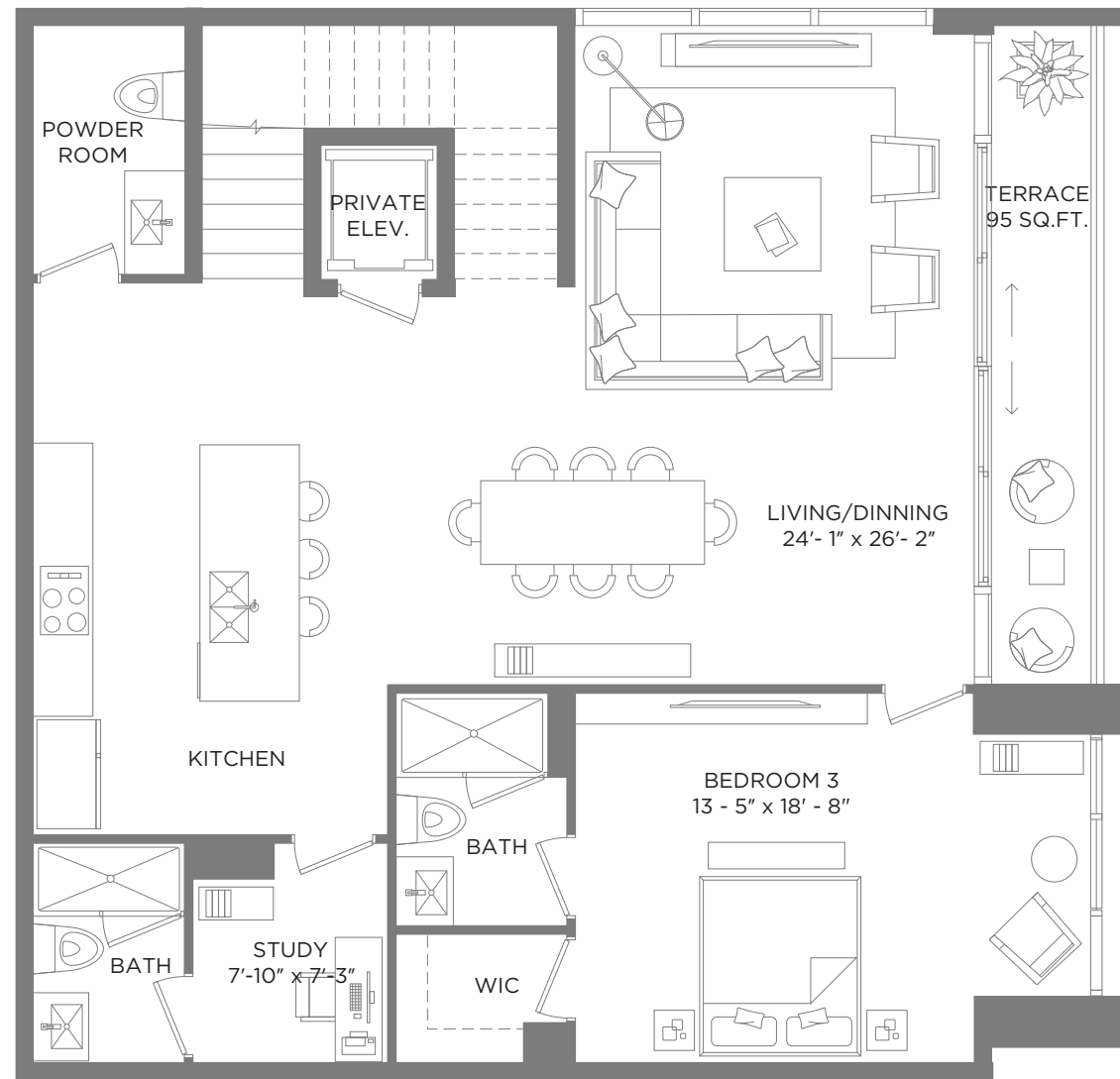
A/C INTERIOR AREA	3,309 SQ.FT.	307.41 SQ. M.
TERRACE AREA	1,485 SQ.FT.	137.96 SQ. M.
TOTAL RESIDENCE	4,794 SQ.FT.	445.37 SQ. M.



3<sup>RD</sup> LEVEL



4<sup>TH</sup> LEVEL



There are various methods for calculating the square footage of a Unit and depending on the method of calculation, the quoted square footage of a Unit in advertising materials may vary from the square footage of a Unit as stated or described in the Prospectus and the Declaration. The dimensions in the Unit shown in these floor plans have been calculated from the exterior boundaries of the exterior walls to the centerline of interior demising walls, including common elements such as structural walls and other interior structural components of the building and in fact vary from the dimensions that would be determined by using the description and definition of the "Unit" set forth in the Prospectus and the Declaration. For your reference, the area of the Unit, determined in accordance with the Unit boundaries as defined in the Prospectus and the Declaration are less than the square footage reflected here. The measurements of room set forth on this floor plan are generally taken at the greatest points of each given room (as if the room were a perfect rectangle) without regard for any cutouts. Accordingly, the area of the actual room will typically smaller than the product obtained by multiplying the stated length times width. All dimensions are approximate and may vary with actual construction. All floor plans are subject to change. The furnishings and décor illustrated are not included with the purchase of the Unit. See Prospectus for information regarding what is offered with the Unit and the calculation of the Unit square footage and dimensions.